

## 2.01 Standard Entrances Description



### Description

Tubelite Standard Entrances have an outstanding reputation for craftsmanship and strength. The Narrow Stile Door has a face dimension of 2 1/8" and is designed for average commercial use. Medium Stile (4") and Wide Stile (5") Doors provide extra durability for heavier traffic and allow a greater variety of hardware options. Optional bottom rail heights of 7 1/2" and 10" are available for accessibility requirements. Snap-in glass stops provide for 1/4" or 1" glazing thicknesses.

Standard Entrances are furnished with mortised butt hinges, offset pivots or center pivots as specified. Standard deadbolt locks, concealed vertical rod or rim panic exit devices may also be selected. Standard pull handles have been designed for ADA access and have matching push bars.

The standard door frame has snap-in door stops to conceal frame anchors and provide an excellent weatherseal. Open-back vertical door jambs allow easy, fast assembly with the screw-spline head member. Snap-in vertical frame closures easily accommodate addition of sidelights and incorporation with storefront framing.

## 2.02

# Standard Entrances

### Guide Specifications

#### General

##### Description

Furnish all necessary materials, labor and equipment for the complete installation of aluminum entrance doors, door frames and hardware as shown on the drawings and specified herein.

Doors and frames shall be as manufactured by Tubelite Inc., Reed City, Michigan. Whenever substitute products are to be considered, supporting technical literature, samples, drawings and performance data must be submitted ten (10) days prior to bid in order to make a valid comparison of the products involved.

Test reports certified by an independent laboratory must be made available upon request.

##### Product

##### Materials

Extrusions shall be of aluminum alloy 6063-T5 extruded within commercial tolerance and free from defects impairing strength and/or durability. Door stile and rail sections to be a minimum of .125 inch wall thickness. Door frame sections to be of .080 inch minimum wall thickness, with glazing and door moldings a minimum of .050 inch.

Steel tension rods of .375 inch diameter shall run the full width of the top and bottom rails and shall be fixed with steel plates and lock nuts.

Door glazing shall be by means of an interior and exterior fixed gasket of high quality extruded elastomeric material. Door frame members shall have a continuous wool pile/vinyl fin weatherstripping at the head and jamb members. Bottom rail weatherstrip at threshold optional (architect specify). Door stops shall be of snap-in design on butt hinge and offset pivot applications, eliminating use of exposed screws.

All door and frame members shall be accurately fitted to flush hairline joints.

All Stock (Narrow Stile) Doors shall have an adjustable setting block in the top rail.

##### Hardware

Stock Entrance Doors and Frames shall have standard hardware as furnished by Tubelite® as follows:

##### Butt Hinged Doors

- P 092 Mortised Ball Bearing Hinges
- P 1565 Push Bar
- P 1564 Pull Handle
- E 0019 1/2" x 4" Threshold
- P 1420 Deadbolt MS Lock
- P 1409 Lock Faceplate, or
- P 1408 Lock Faceplate (pairs of doors)
- \* P 2100 Tubelite/LCN Surface Closer
- P 059 Flush Bolts (pairs of doors)

##### Offset Pivot Doors

- P 795 Top and Bottom Pivots
- P 1565 Push Bar
- P 1564 Pull Handle
- E 0019 1/2" x 4" Threshold
- P 1420 Deadbolt MS lock
- P 1409 Lock Faceplate, or
- P 1408 Lock Faceplate (pairs of doors)
- \* P 2100 Tubelite/LCN Surface Closer
- P 059 Flush Bolts (pairs of doors)

##### Center Pivot Doors

- \* P 2120 Concealed Overhead Closer with Bottom Pivot
- P 1565 Push Bars
- E 0019 1/2" x 4" Threshold
- P 1420 Deadbolt Lock
- P 1409 Lock Faceplate, or
- P 1408 Lock Faceplate (pairs of doors)
- P 059 Flush Bolts (pairs of doors)

Special hardware for custom doors and entrances shall be specified by the architect. Hardware furnished by others shall be sent to the door manufacturer for application.

##### Finish

All exposed framing surfaces shall be free of scratches and other serious blemishes.

Finish to be: (architect select)

- Etched and clear anodized (AAM10C21A31)
  - Clear - Class II (C2)
- (AAM10C21A41)
  - Clear - Class I (C1)
- Electrolytically deposited color (AAM10C21A44) Class 1
  - Champagne (CH)
  - Light Bronze (LB)
  - Medium Bronze (MB)
  - Dark Bronze (DB)
  - Extra Dk Bronze (EB)
  - Black (BL)

Fluoropolymer (70%) painted color \_\_\_\_\_.

\*Door closers are not included in standard door pricing. See Section 7 for door closer information.

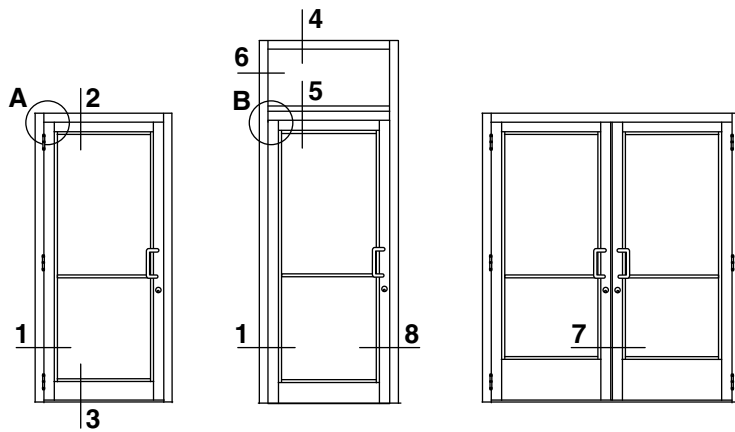
##### Execution

##### Installation

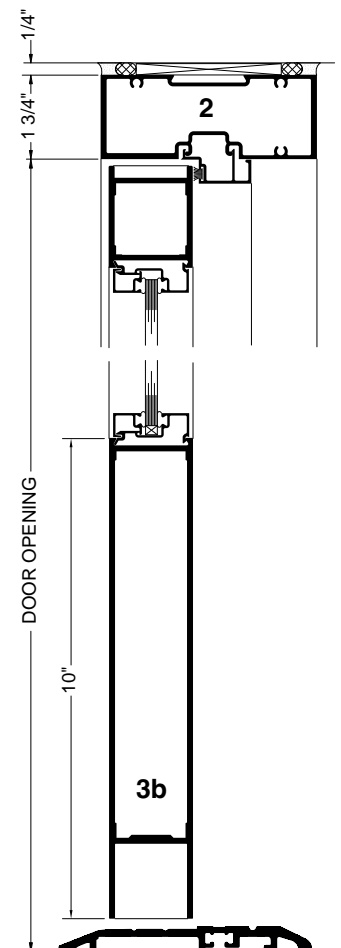
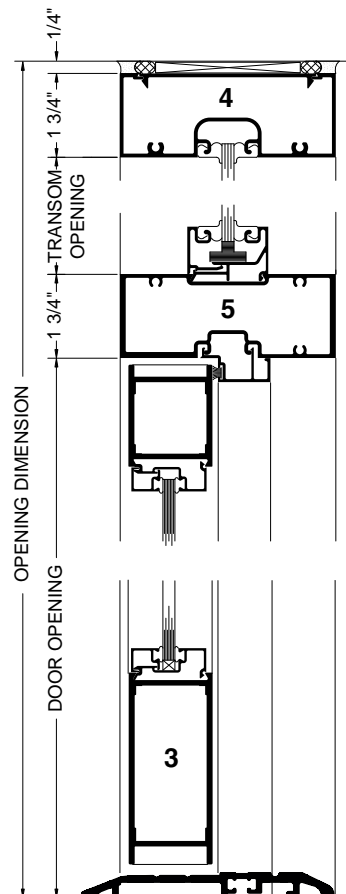
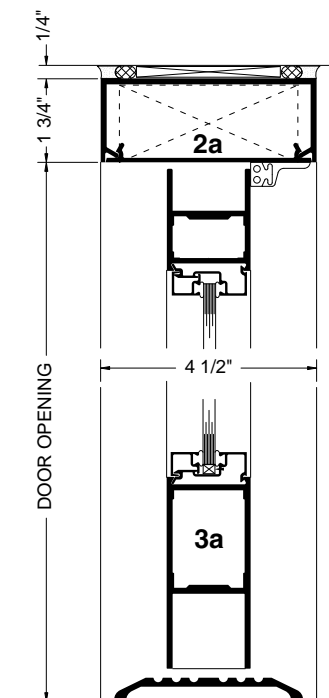
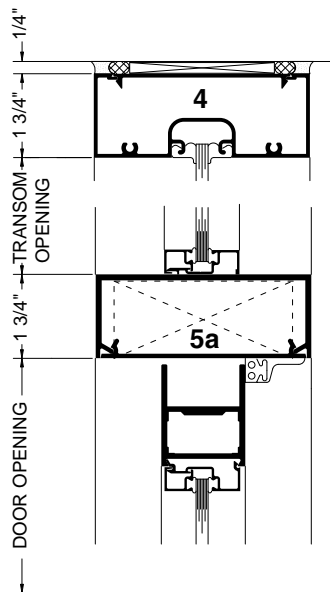
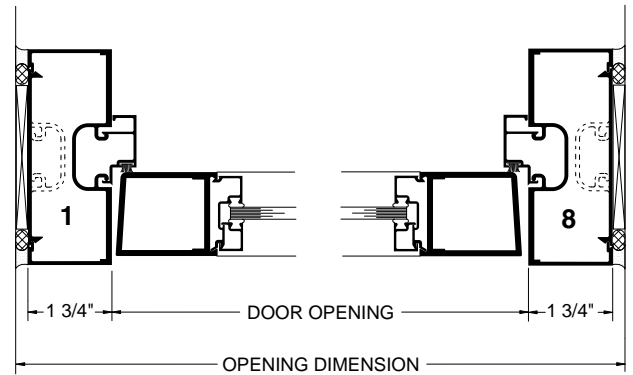
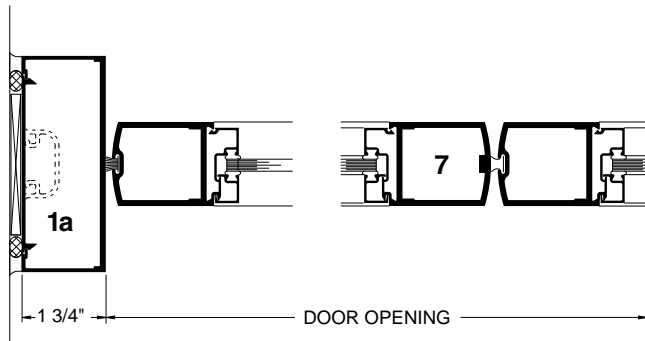
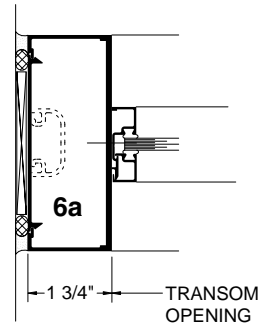
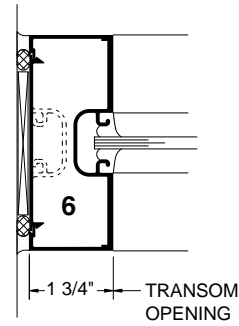
Shall be in accordance with the manufacturer's installation instructions and the approved shop drawings.

**Note:** In keeping with Tubelite's policy of continuing product improvements, all specifications are subject to change without written notice by the manufacturer.

## 2.03 Standard Entrances Key Elevation & 1/4 Size Details



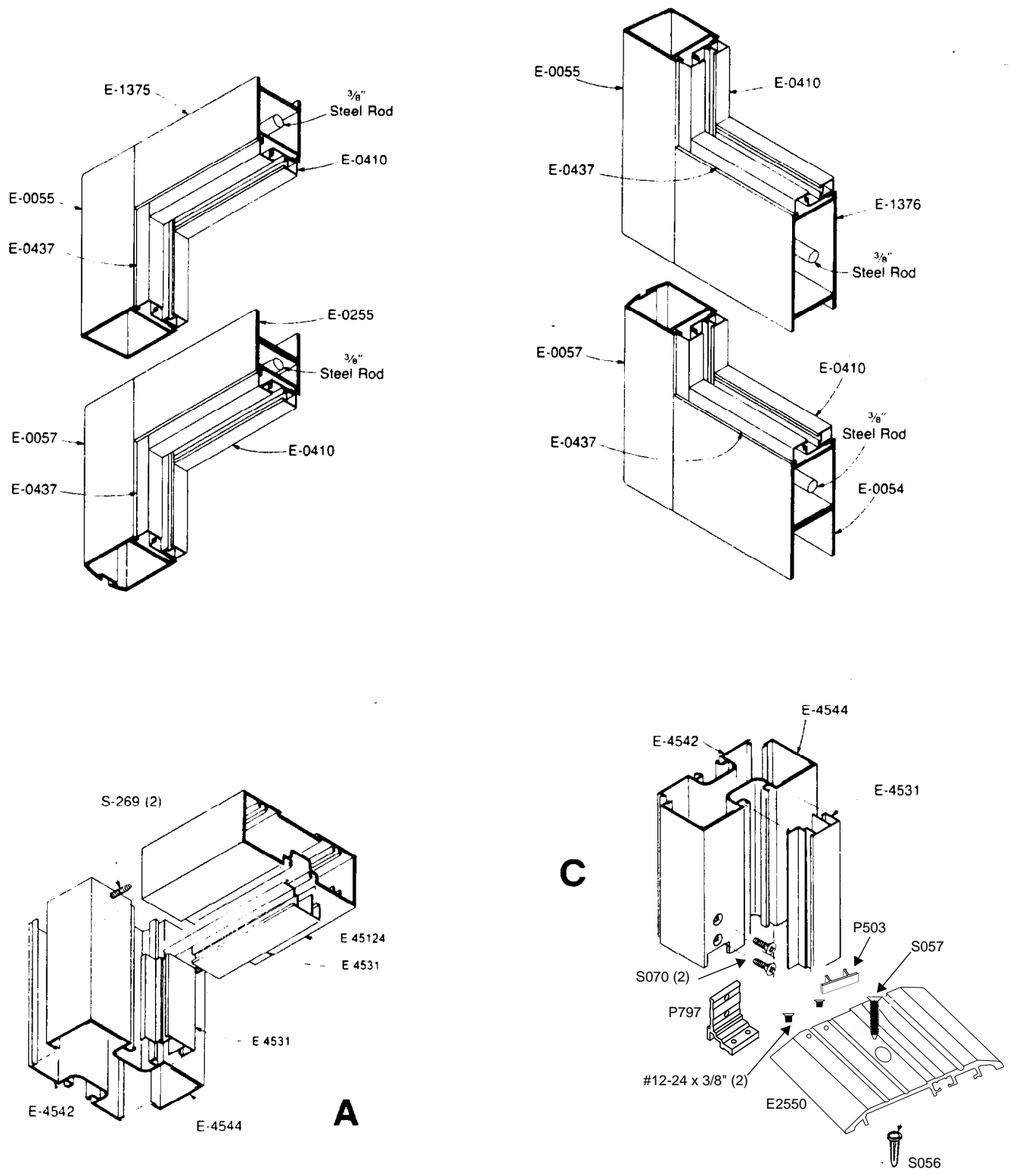
**KEY ELEVATIONS**



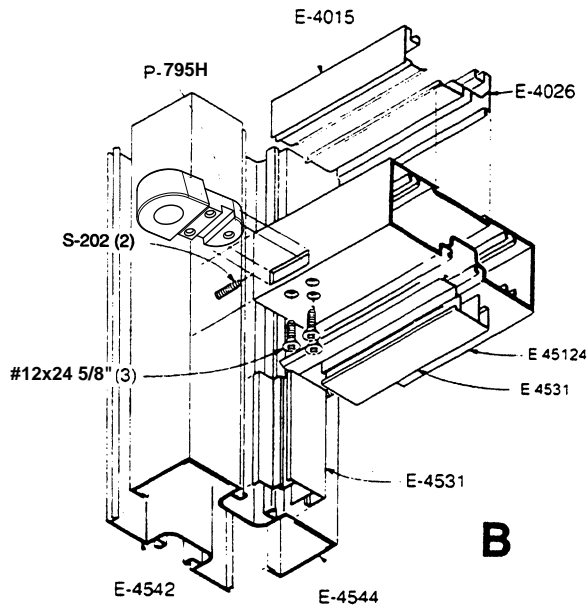
# 2.04

## Standard Entrances

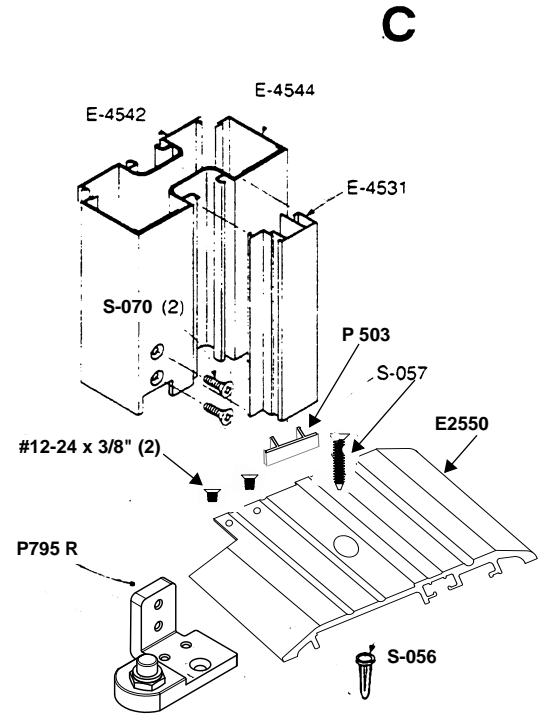
### Isometric Details



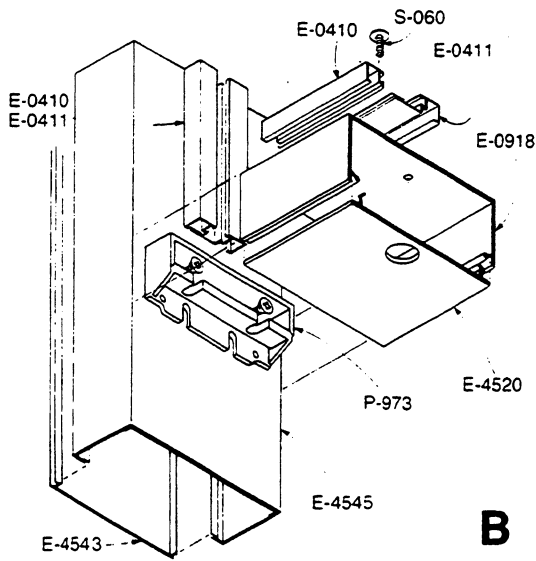
# 2.05 Standard Entrances Isometric Details



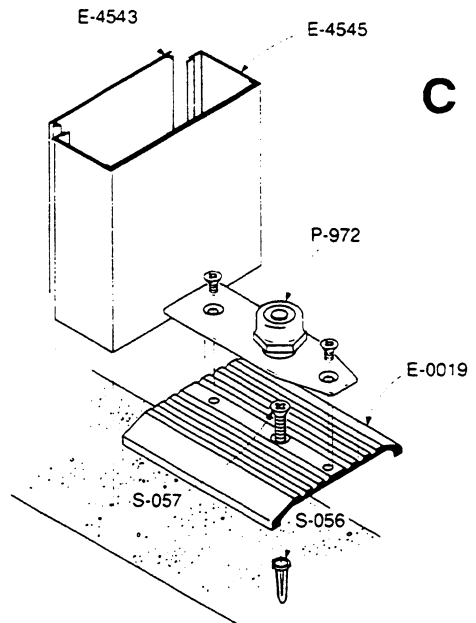
**B**



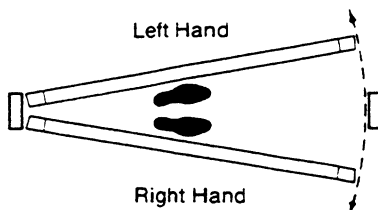
**C**



**B**



**C**



NOTE: Double acting doors are not handed.

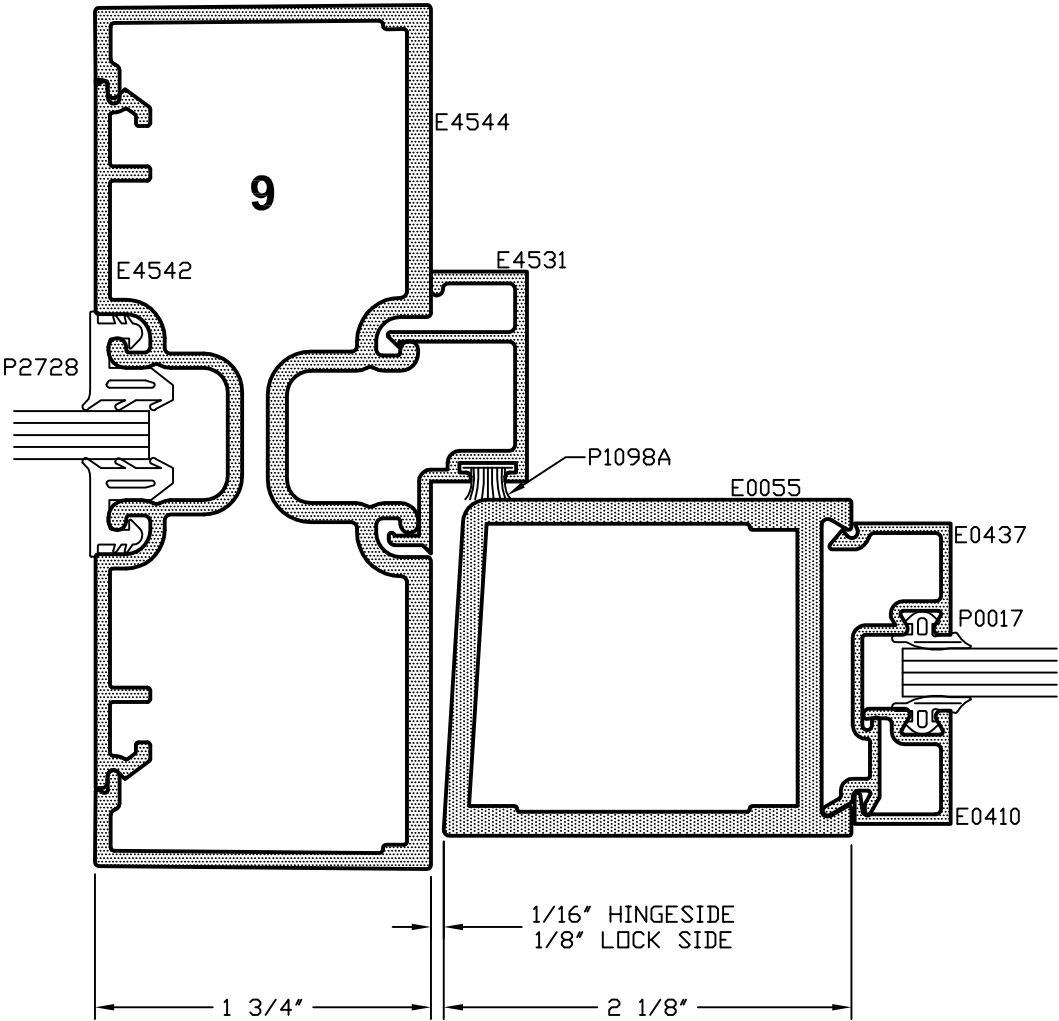
2.06

Standard Entrances

4500 Door Jamb-Narrow Stile Offset Pivot or Butt Hinge

CAD DETAIL FILE NO.  
160DRJBNS

STANDARD SIZES	
SINGLE DOORS	DOUBLE DOORS
3'-0" X 7'-0"	5'-0" X 7'-0"
3'-6" X 7'-0"	6'-0" X 7'-0"



2.06a

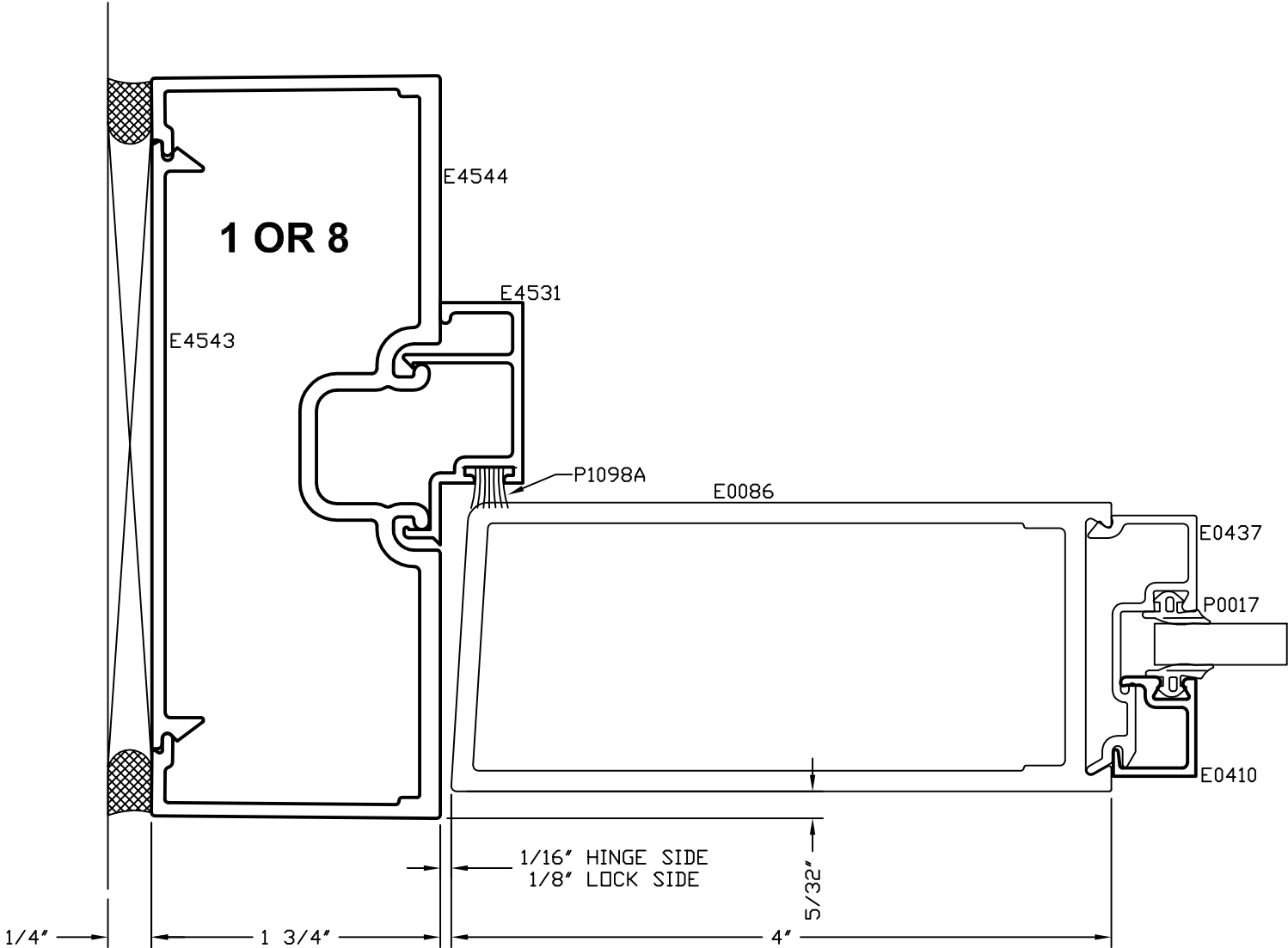
Standard Entrances

Door Jamb - Medium Stile Offset Pivot or Butt Hinge

CAD DETAIL FILE NO.  
090DRJBMS

STANDARD SIZES

SINGLE DOORS	DOUBLE DOOR
3'-6" X 7'-0"	6'-0" X 7'-0"



2.06b

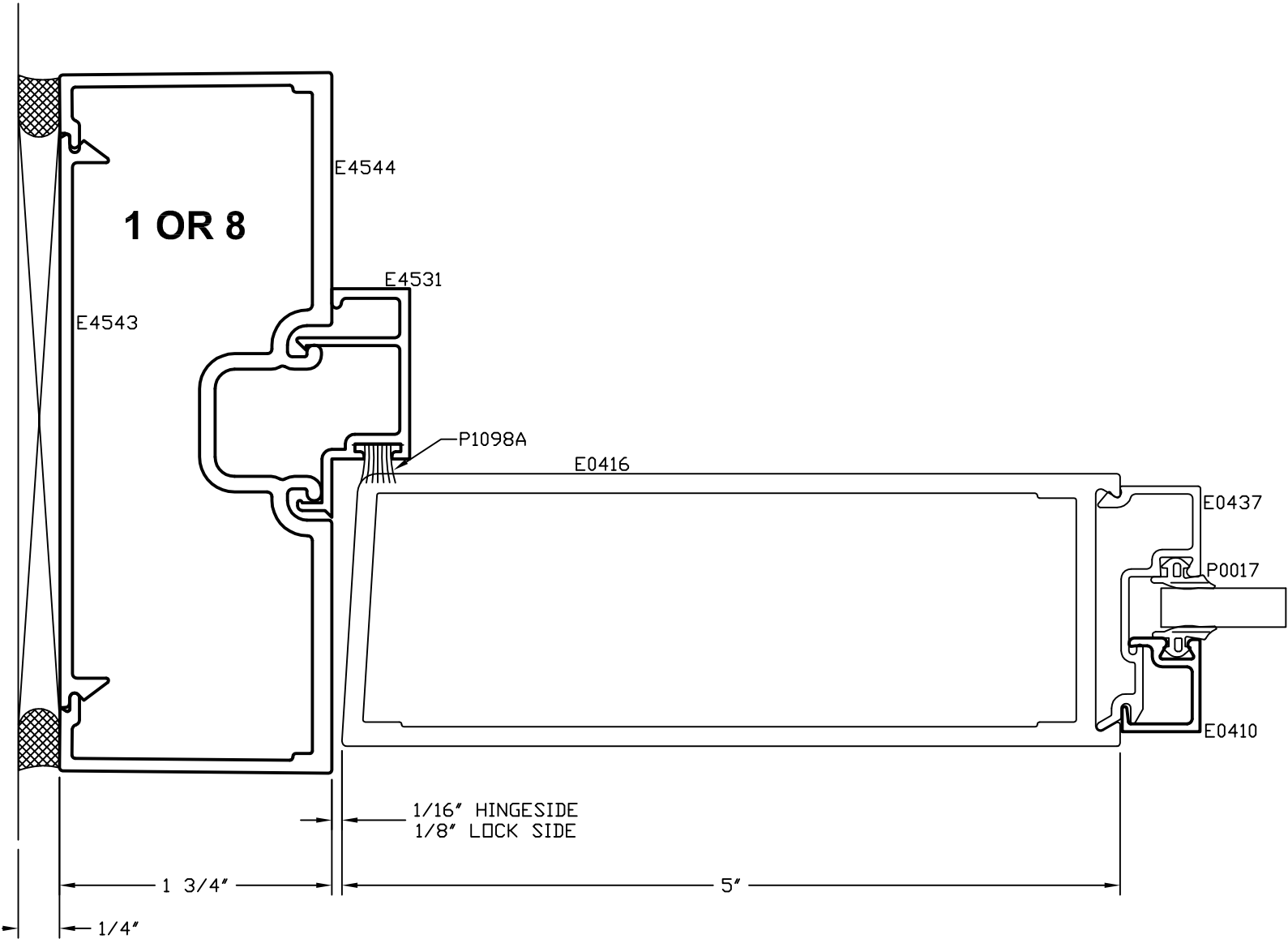
Standard Entrances

Door Jamb - Wide Stile Offset Pivot or Butt Hinge

CAD DETAIL FILE NO.  
090DRJBWS

STANDARD SIZES

SINGLE DOORS	DOUBLE DOORS
3'-0" X 7'-0"	5'-0" X 7'-0"
3'-6" X 7'-0"	6'-0" X 7'-0"

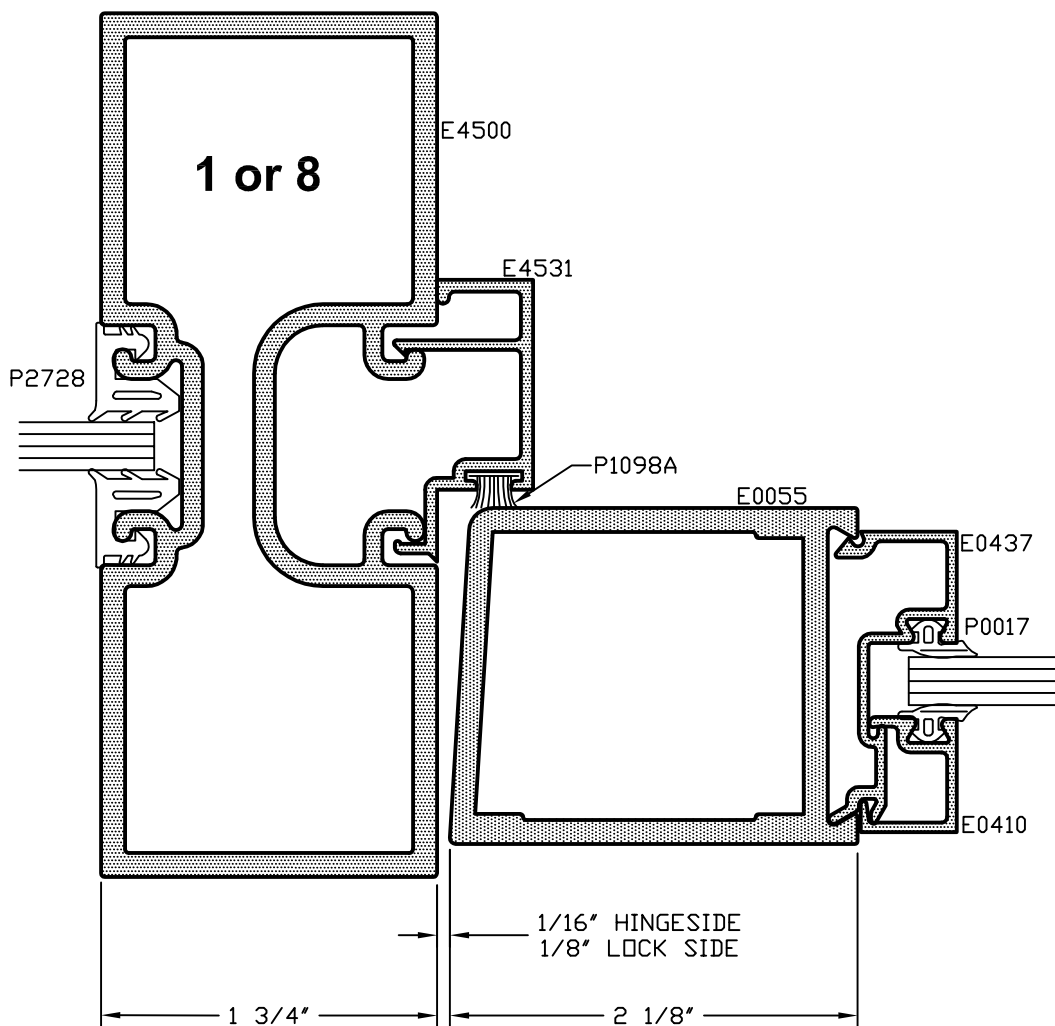




**Standard Entrances****4500 Door Jamb - Narrow Stile Offset Pivot or Butt Hinge**STANDARD SIZES

SINGLE DOORS	DOUBLE DOORS
3'-0" X 7'-0"	5'-0" X 7'-0"
3'-6" X 7'-0"	6'-0" X 7'-0"

CAD DETAIL FILE NO.  
160DRJBNS1



\*SEALANT, ROD, & ANCHORS NOT BY TUBELITE

## 2.07a

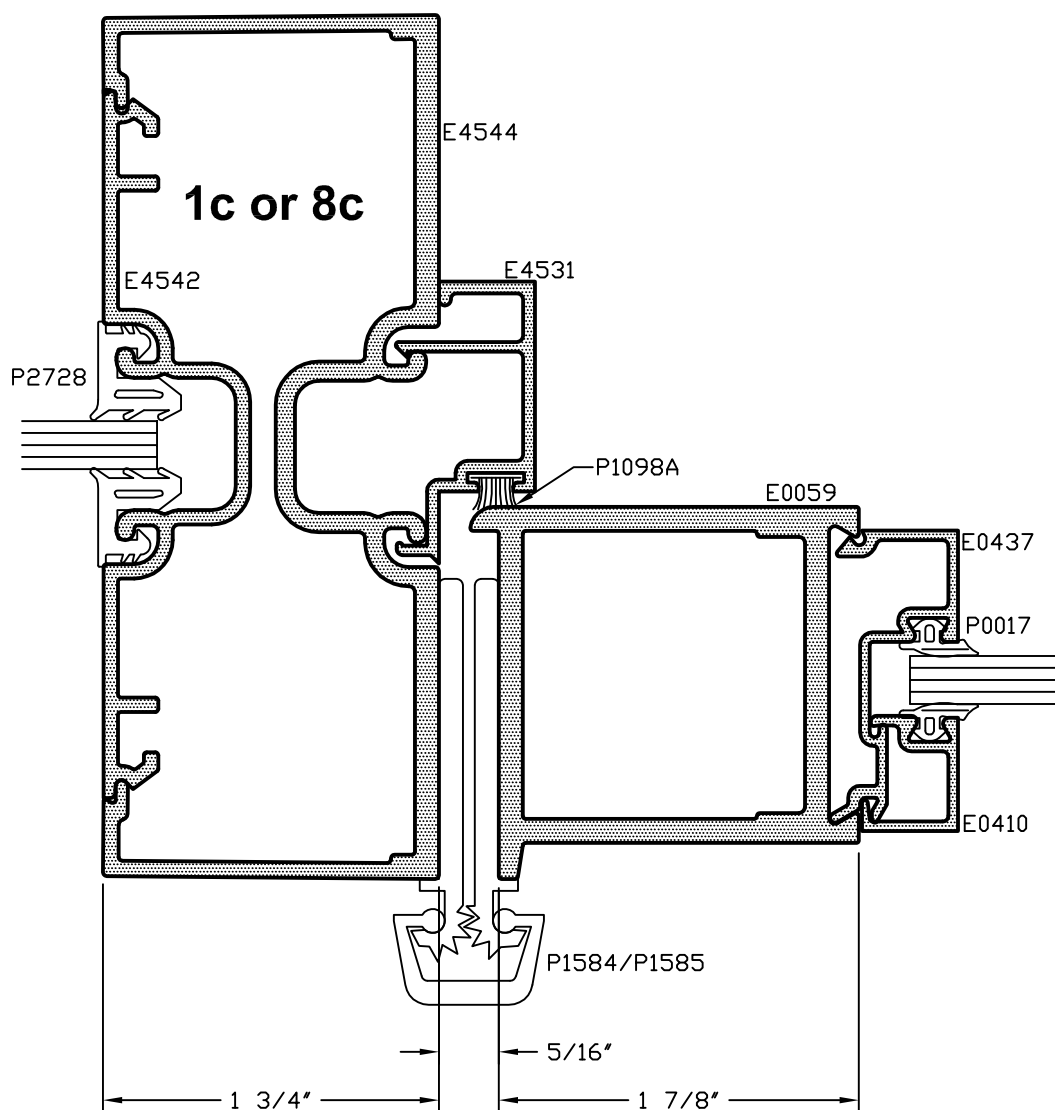
### Standard Entrances

#### 4500 Door Jamb - Narrow Stile With Continuous Hinge

CAD DETAIL FILE NO.  
160DRJBNSCH

#### STANDARD SIZES

SINGLE DOORS	DOUBLE DOORS
3'-0" X 7'-0"	5'-0" X 7'-0"
3'-6" X 7'-0"	6'-0" X 7'-0"



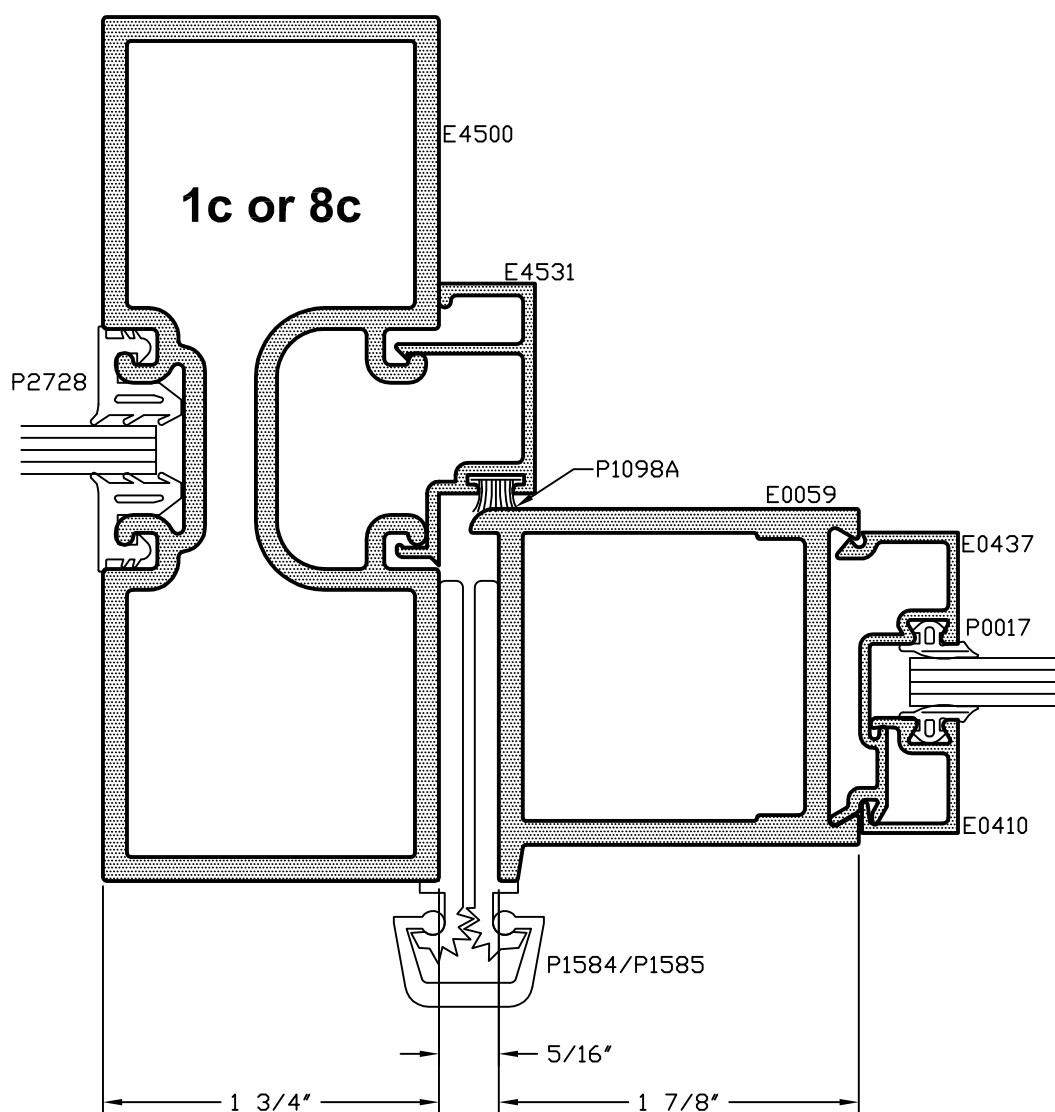
## Standard Entrances

## 4500 Door Jamb - Narrow Stile With Continuous Hinge

## STANDARD SIZES

SINGLE DOORS	DOUBLE DOORS
3'-0" X 7'-0"	5'-0" X 7'-0"
3'-6" X 7'-0"	6'-0" X 7'-0"

CAD DETAIL FILE NO.  
160DRJBNSCH1



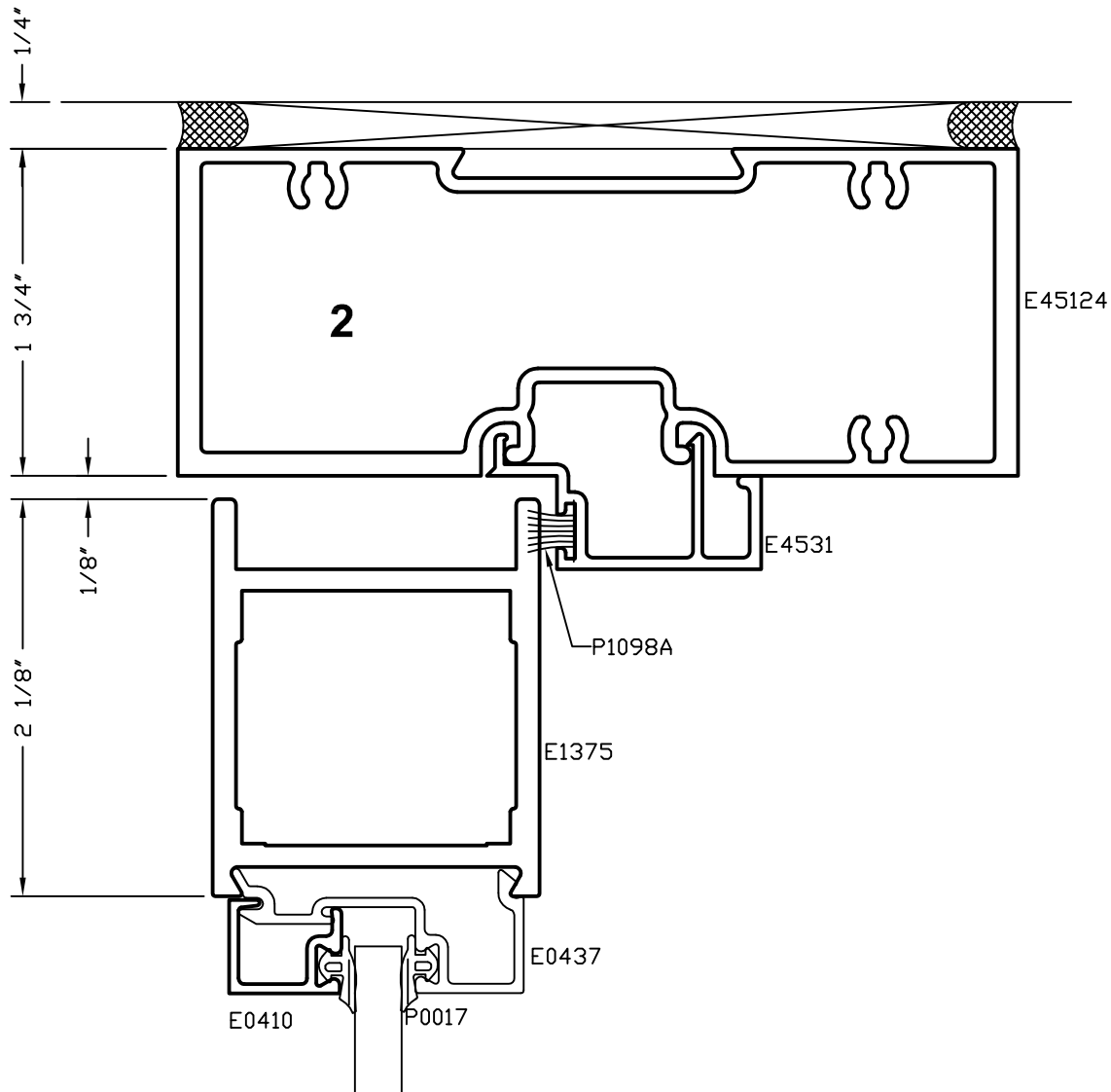
\*SEALANT, ROD, & ANCHORS NOT BY TUBELITE

## 2.08

### Standard Entrances

#### Head - Narrow Stile Offset Pivot or Butt Hinge

CAD DETAIL FILE NO.  
090DRTRNS

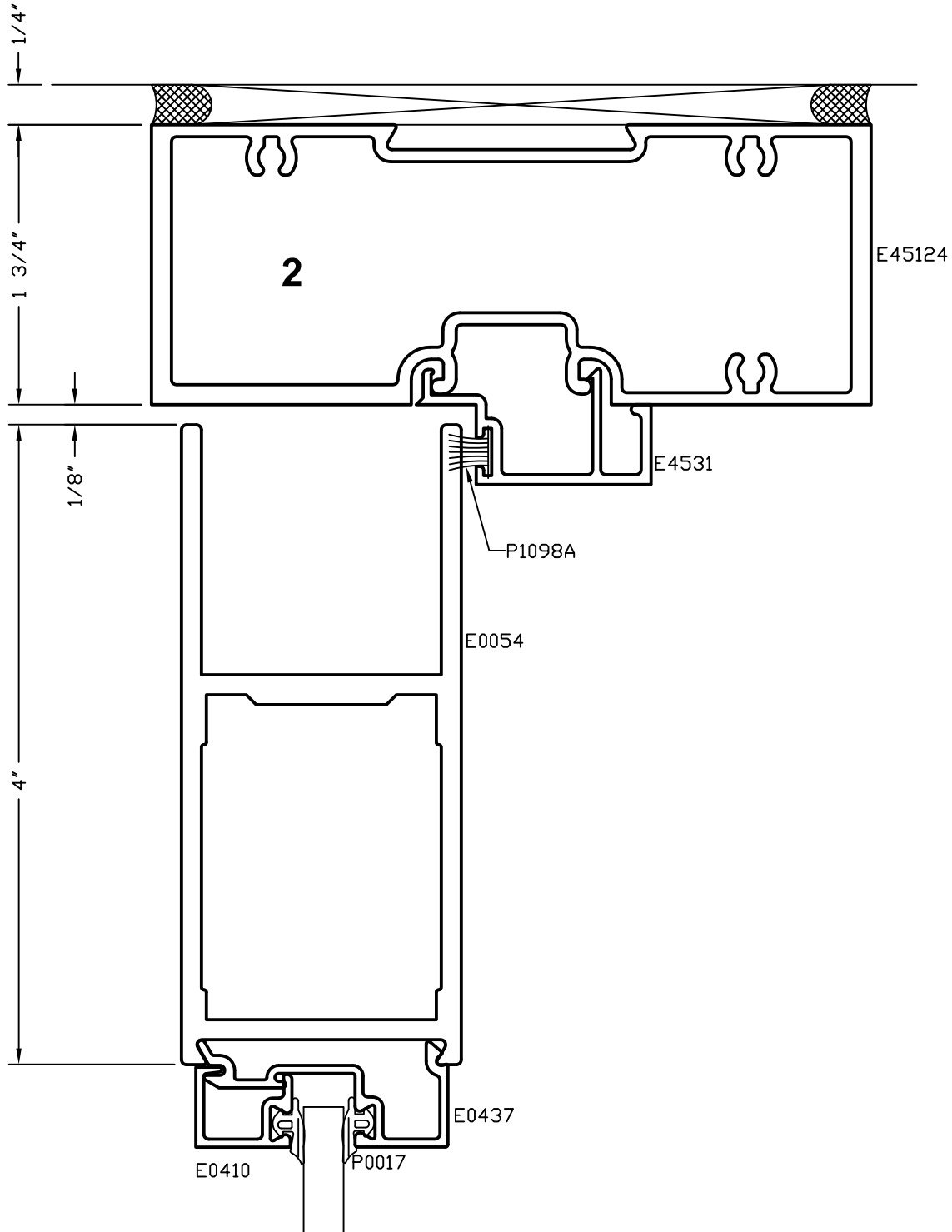


# 2.08A

## Standard Entrances

### Head - Medium Stile Offset Pivot or Butt Hinge

CAD DETAIL FILE NO.  
090DTRMS



\*SEALANT, ROD, & ANCHORS NOT BY TUBELITE

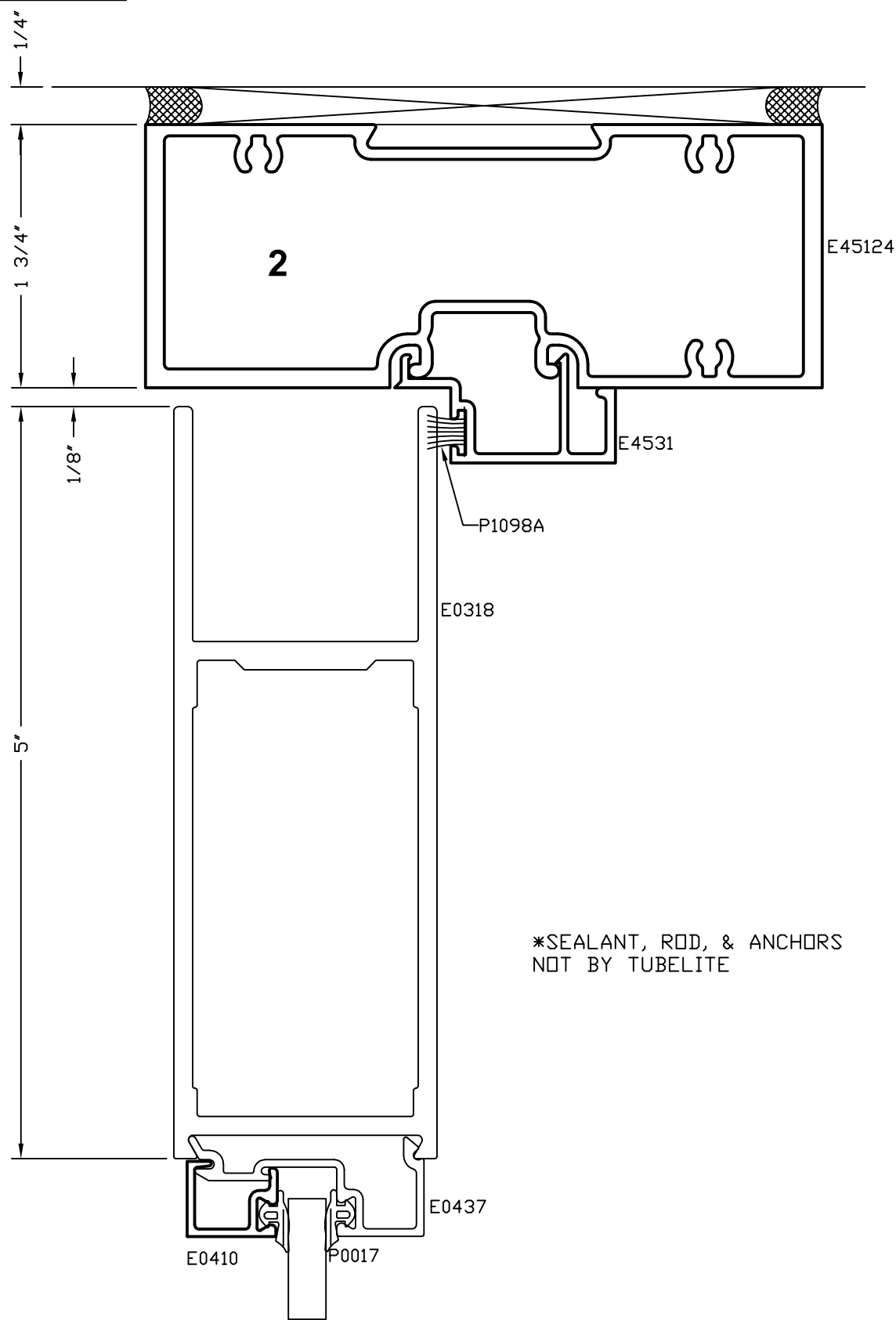
**TUBELITE**  
DEPENDABLE  
LEADERS IN ECO-EFFICIENT STOREFRONT,  
CURTAINWALL AND ENTRANCE SYSTEMS  
2014

2.08B

Standard Entrances

Head - Wide Stile Offset Pivot or Butt Hinge

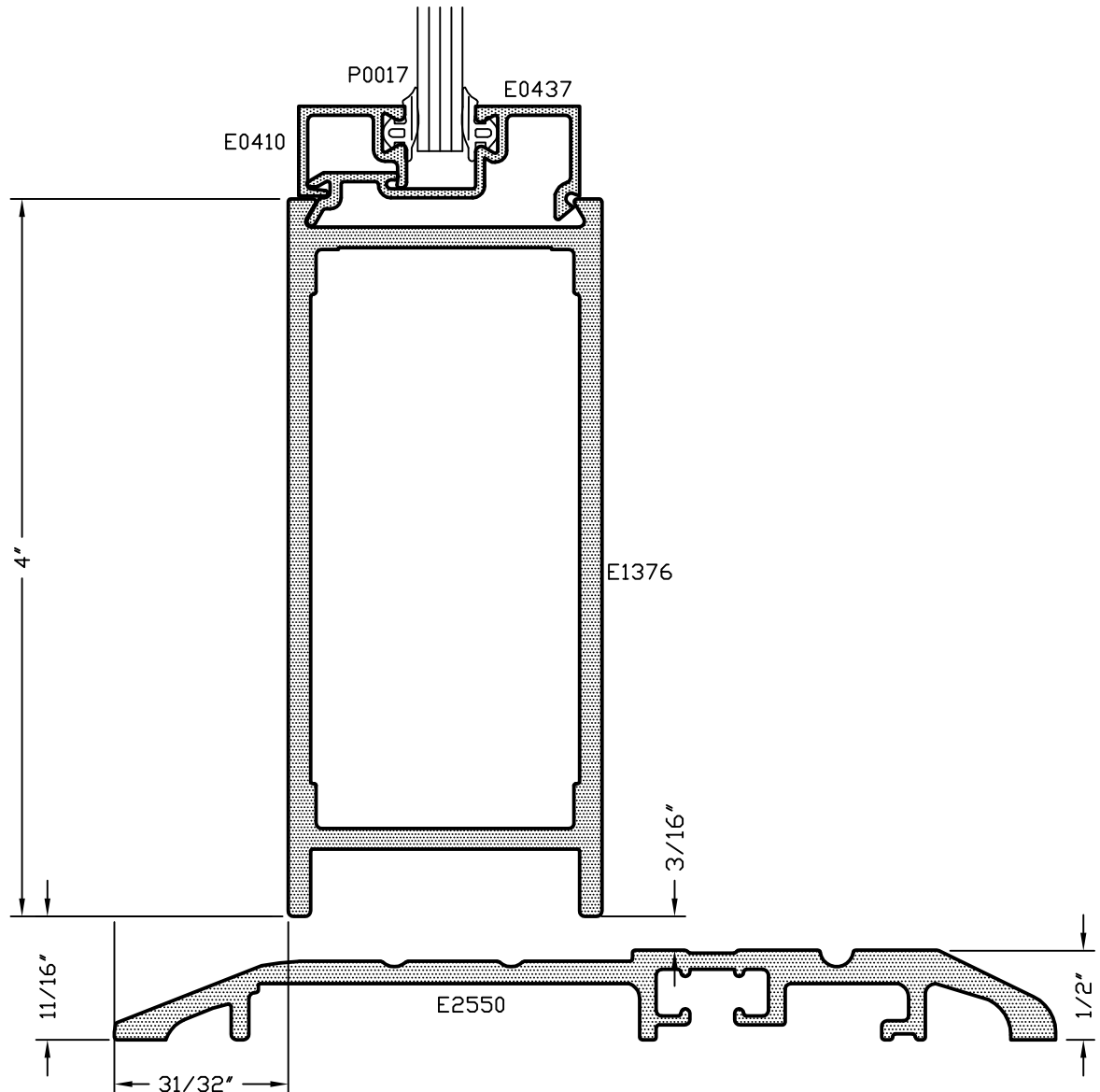
CAD DETAIL FILE NO.  
090DRTRWS



## Standard Entrances

### Bottom Rail - Offset Pivot or Butt Hinge

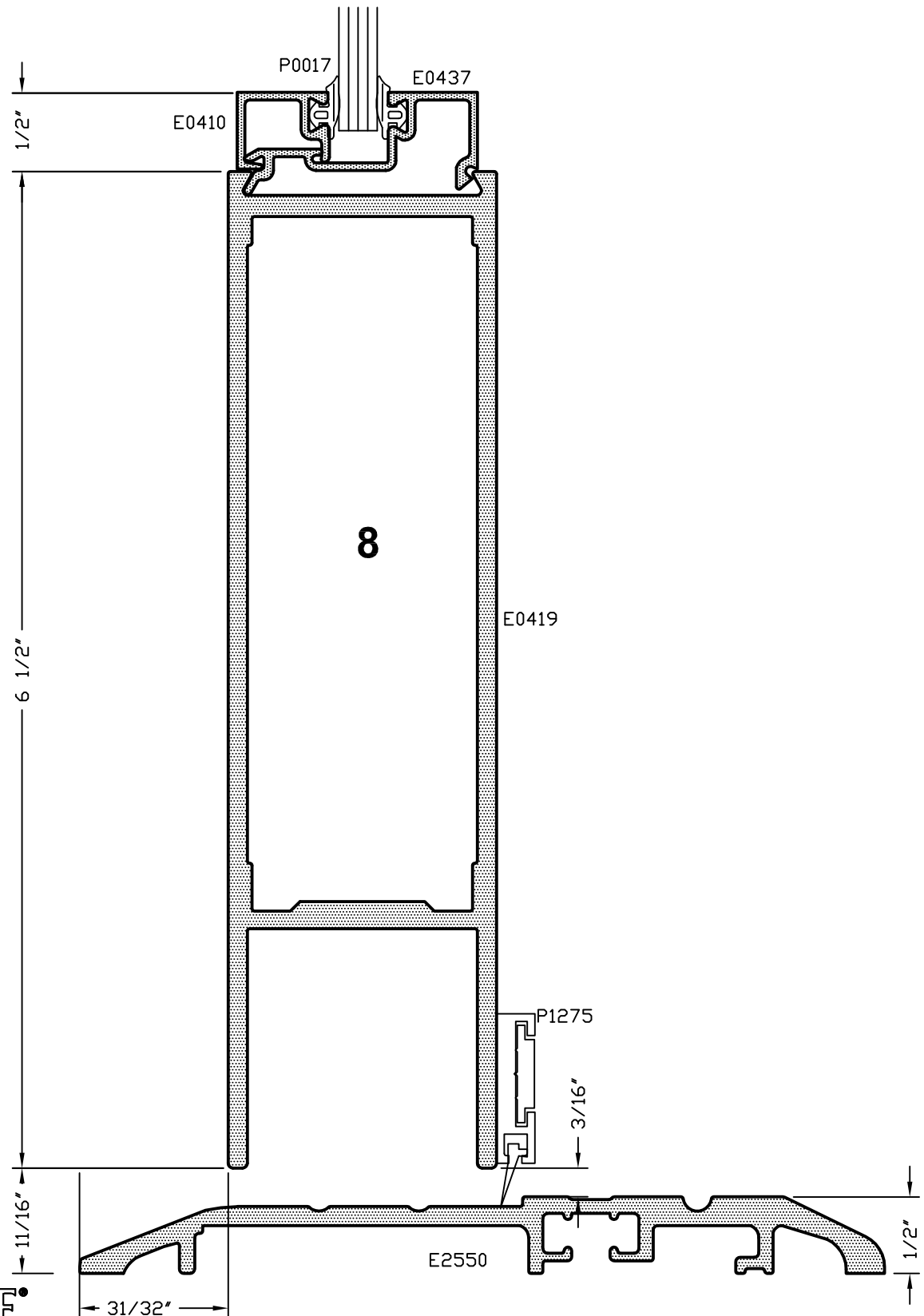
CAD DETAIL FILE NO.  
090DRBR



\*SEALANT, ROD, & ANCHORS NOT BY TUBELITE

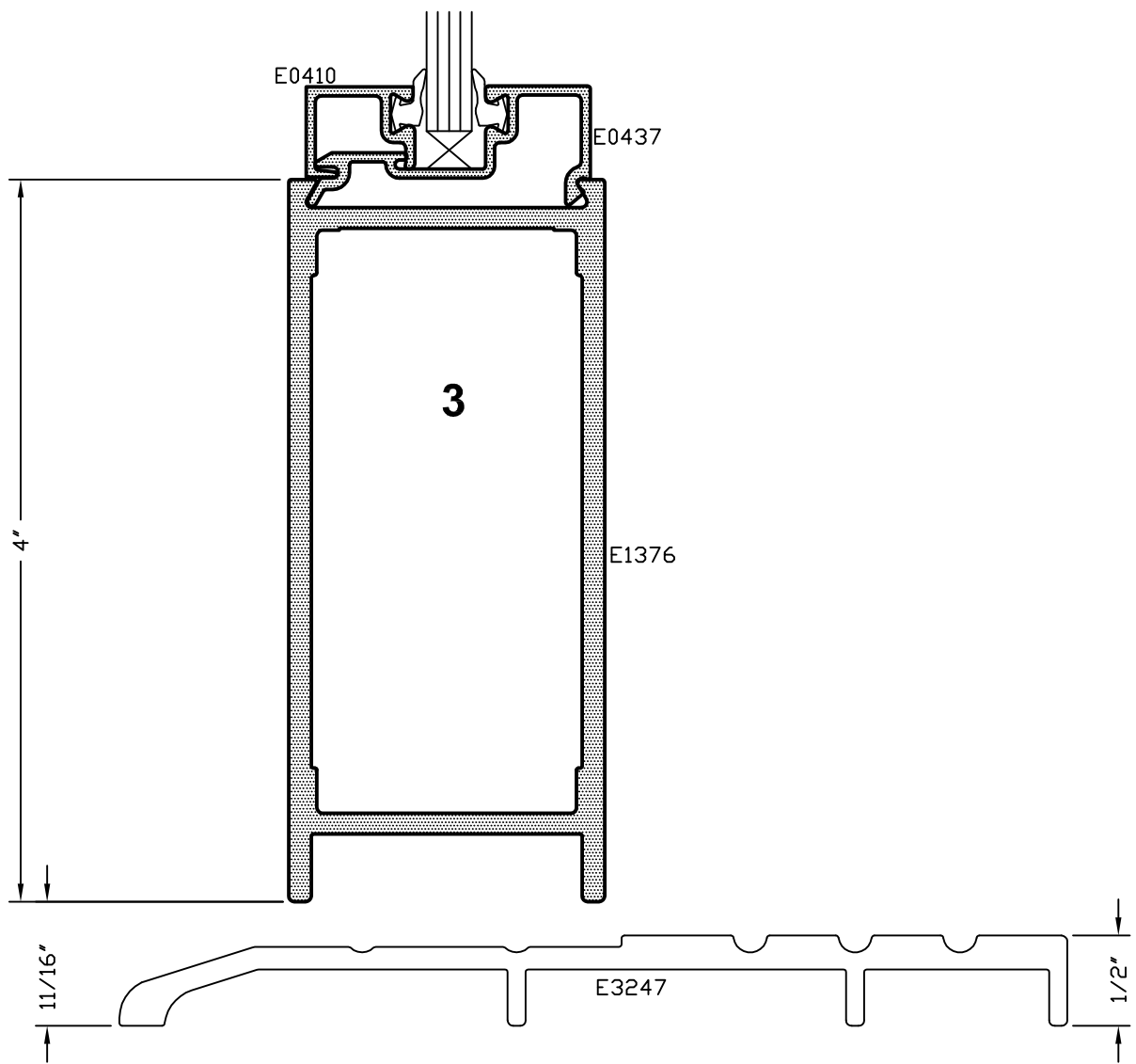
Standard Entrances  
Door Bottom Rail

CAD DETAIL FILE NO.  
090DRBR3



\*SEALANT, ROD, & ANCHORS NOT BY TUBELITE



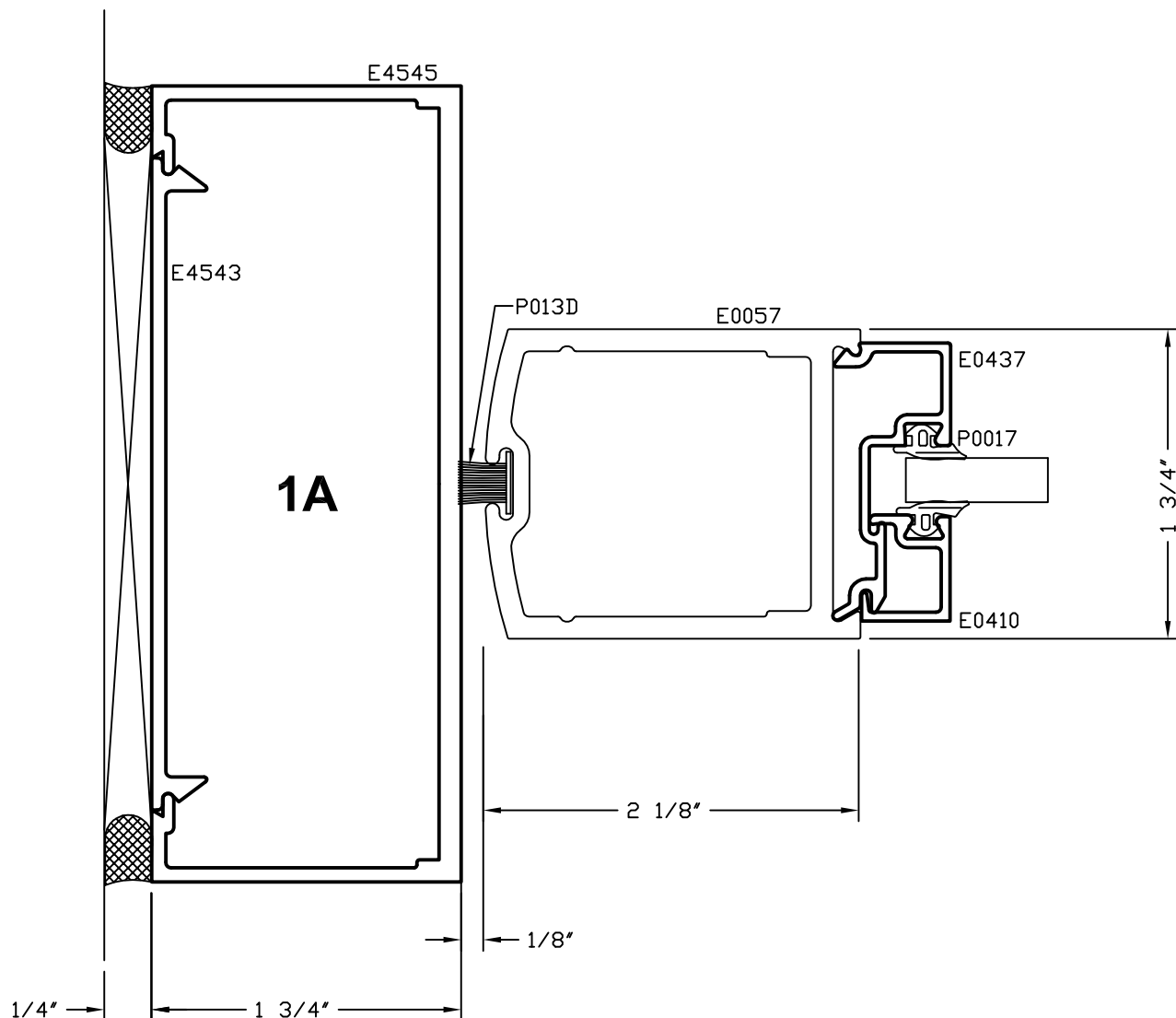


## 2.10

### Standard Entrances

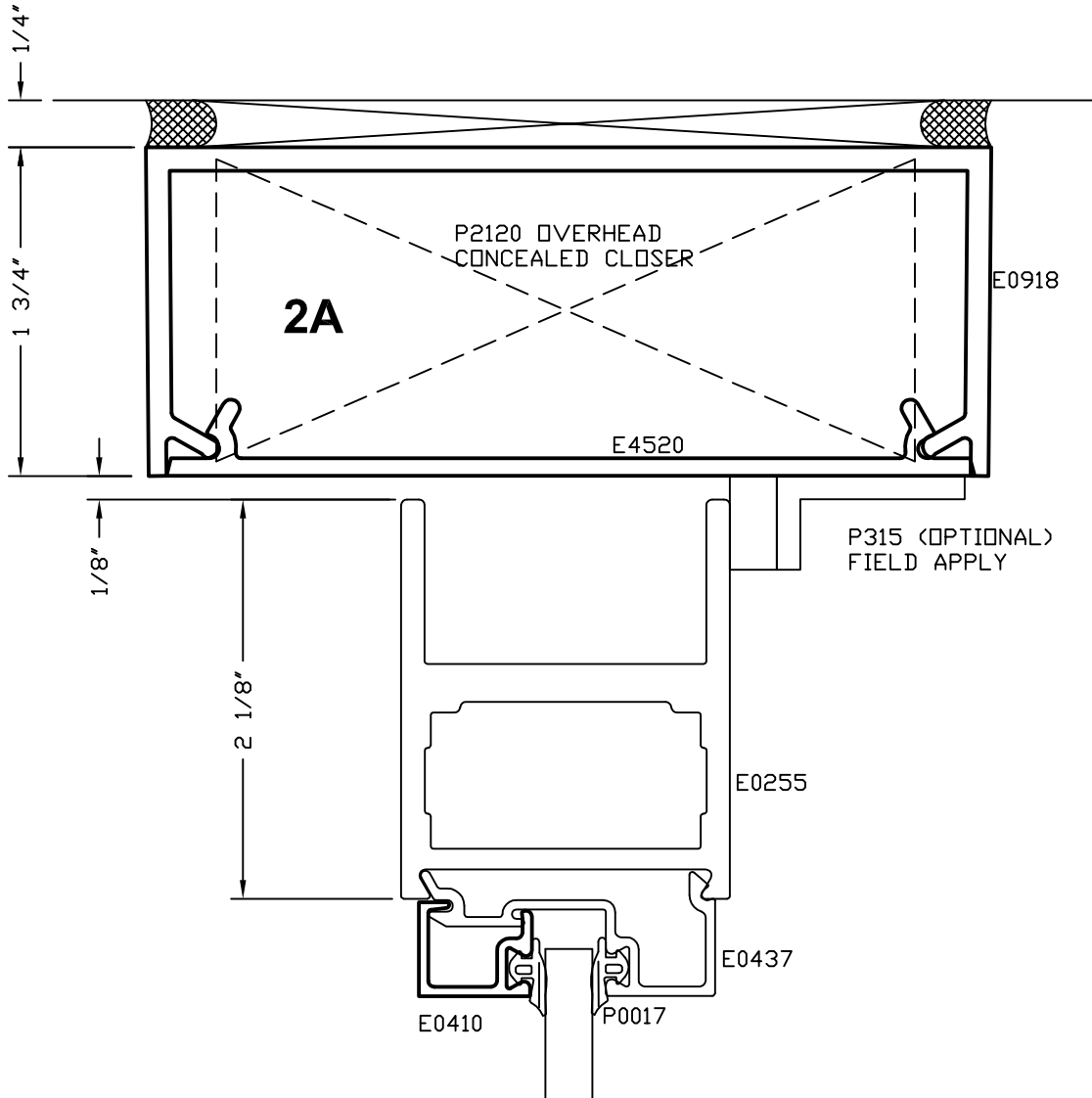
#### Jamb - Center Pivot

CAD DETAIL FILE NO.  
090DRJB2



## 2.11 Standard Entrances Head - Center Pivot

CAD DETAIL FILE NO.  
090DRTR2

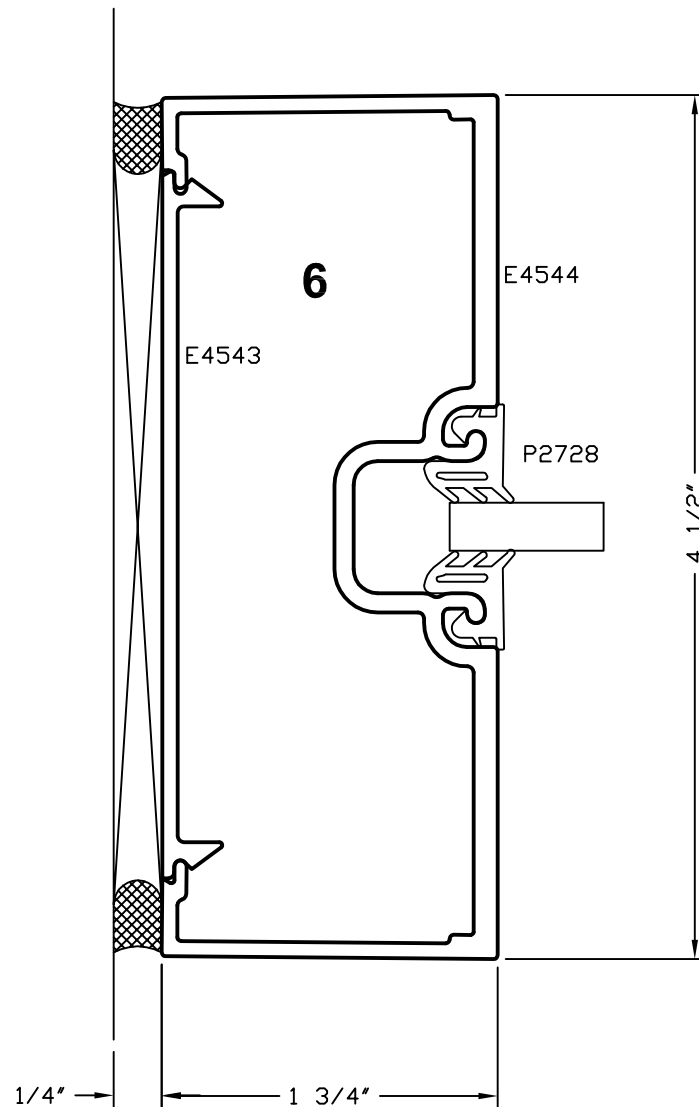


\*SEALANT, ROD, & ANCHORS NOT BY TUBELITE

# Standard Entrances

## Transom Jamb - Offset Pivot or Butt Hinge

CAD DETAIL FILE NO.  
090JAMB



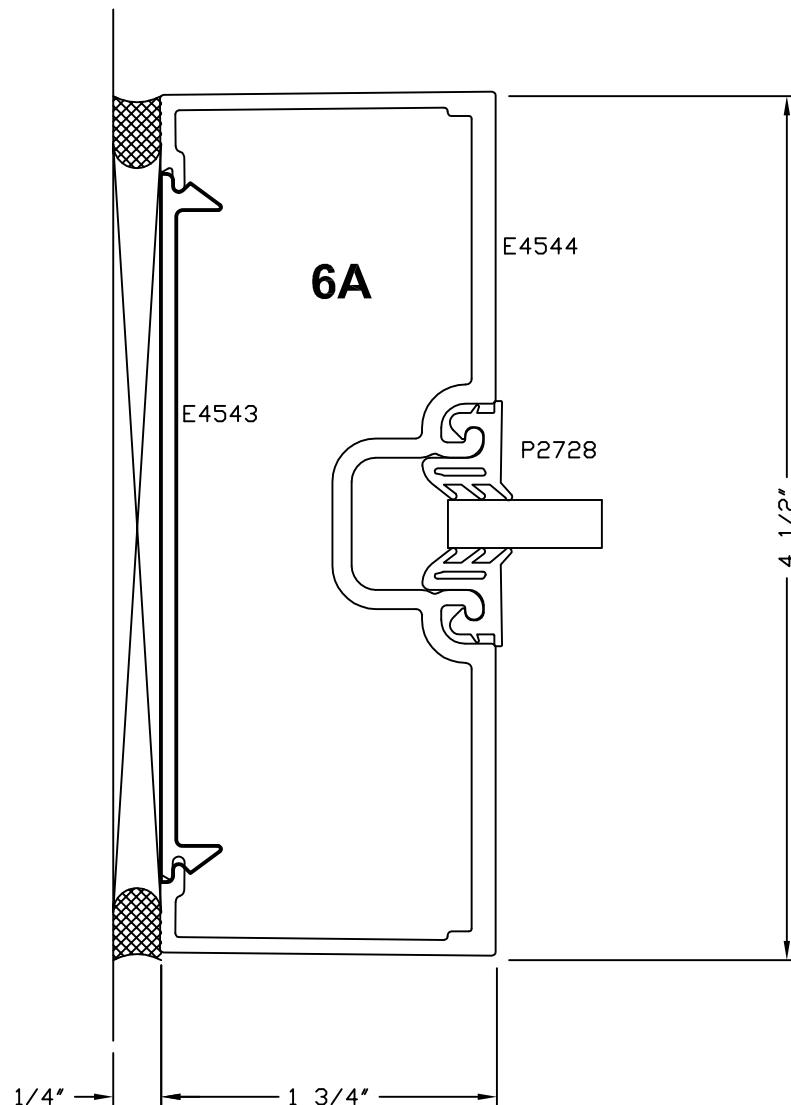
\*SEALANT, ROD, & ANCHORS NOT BY TUBELITE

## 2.14

### Standard Entrances

#### Transom Jamb - Center Pivot

CAD DETAIL FILE NO.  
090JAMB2

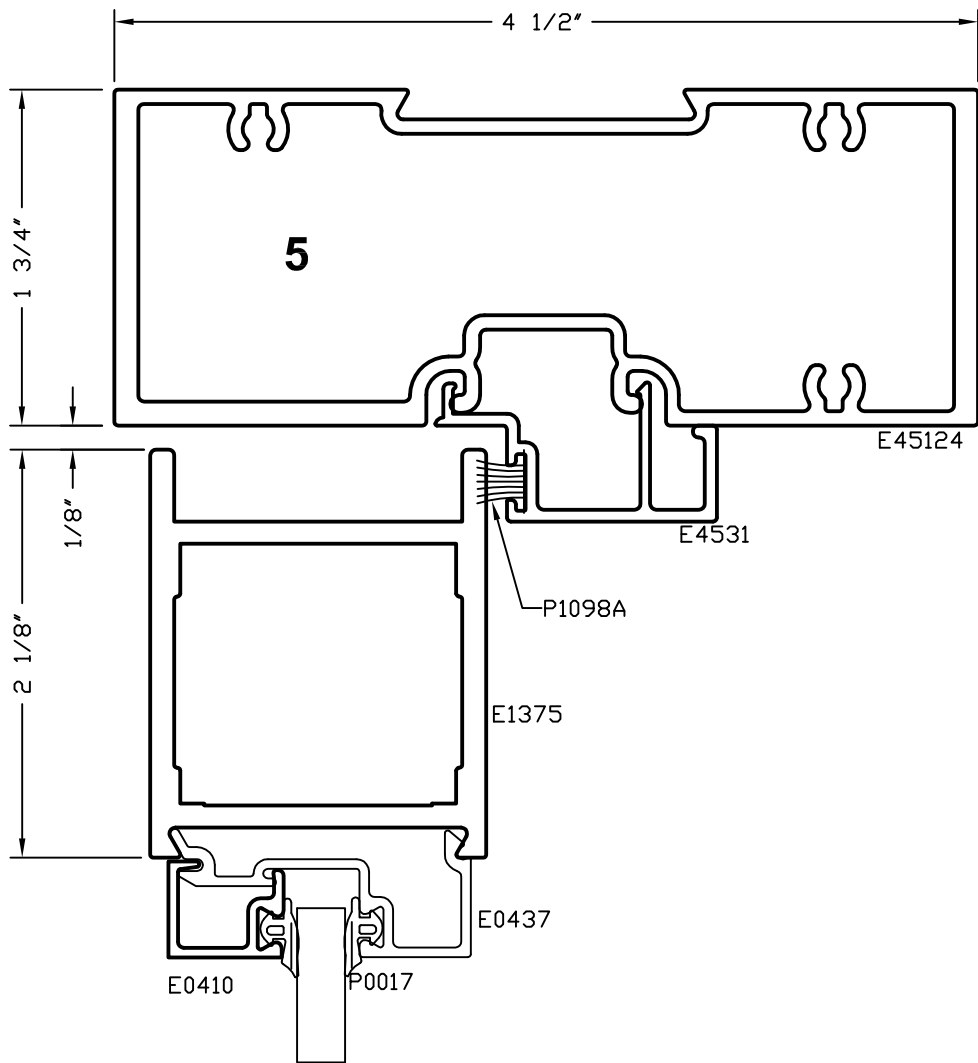


2.15

**Standard Entrances**

**Transom Bar - Offset Pivot or Butt Hinge**

CAD DETAIL FILE NO.  
090TRAN



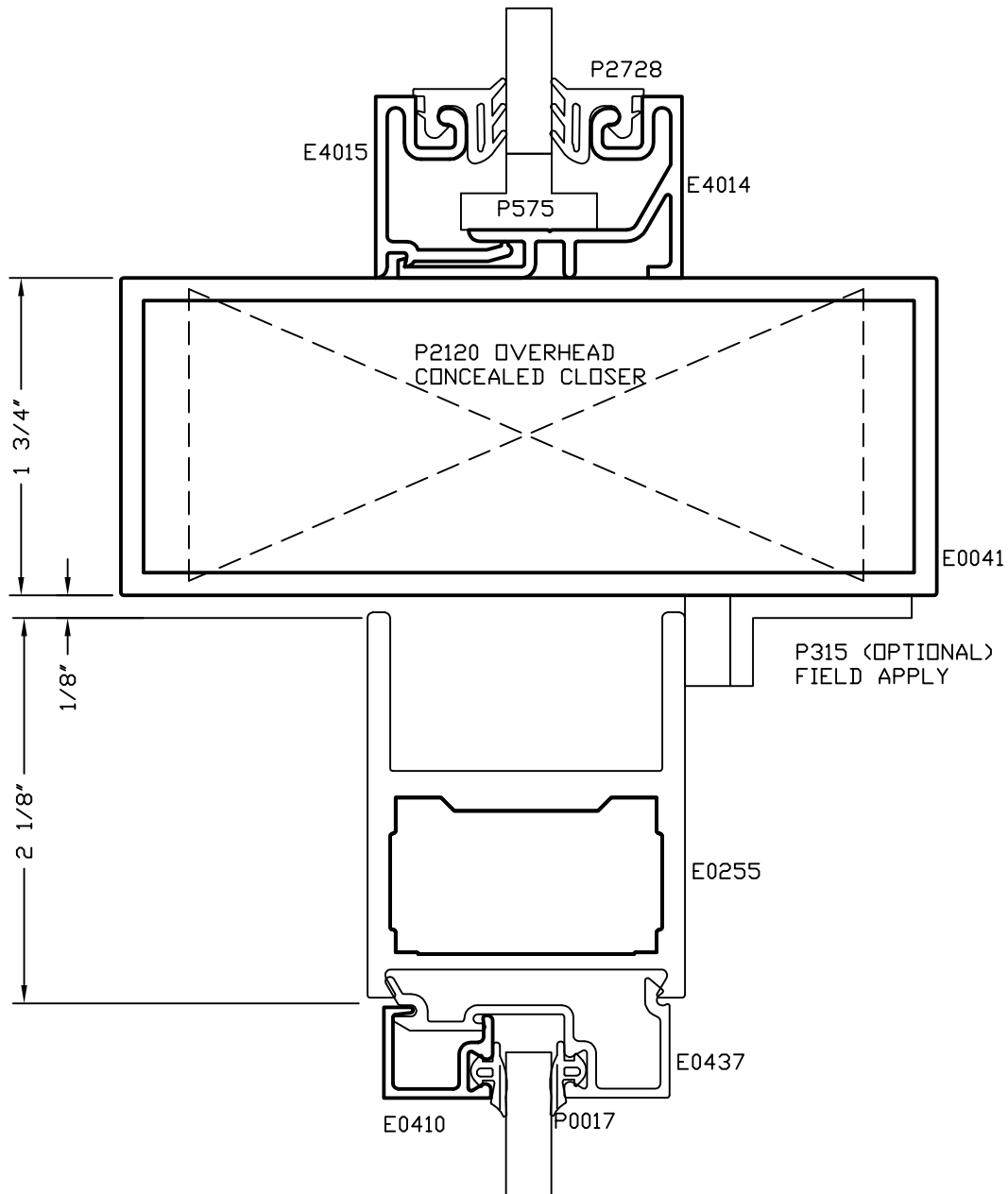
\*SEALANT, ROD, & ANCHORS NOT BY TUBELITE

## 2.16

### Standard Entrances

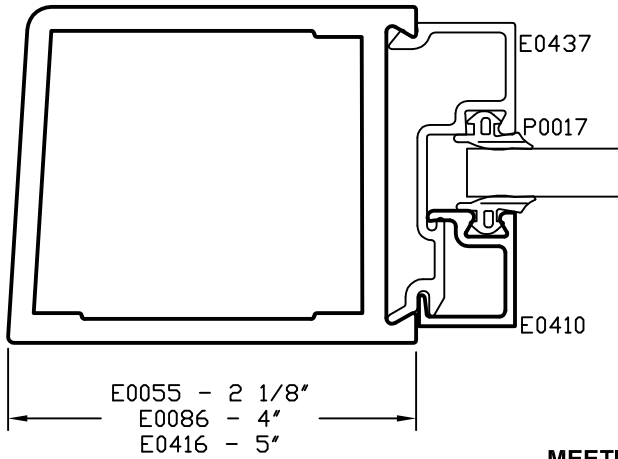
#### Transom Bar - Center Pivot

CAD DETAIL FILE NO.  
090TRAN2

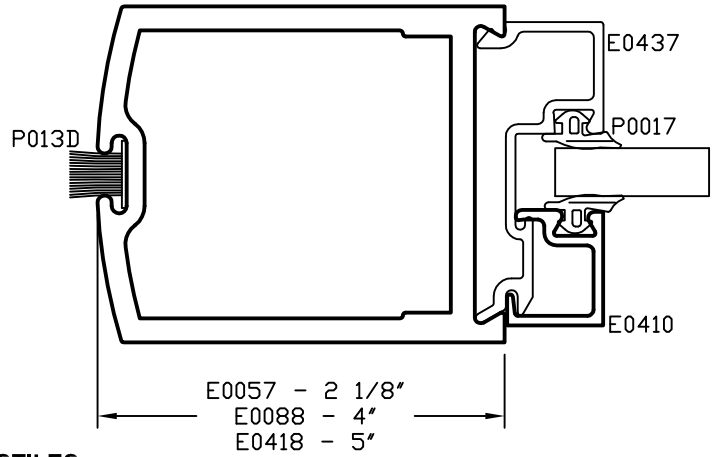


## 2.17 Standard Entrances Door Stiles

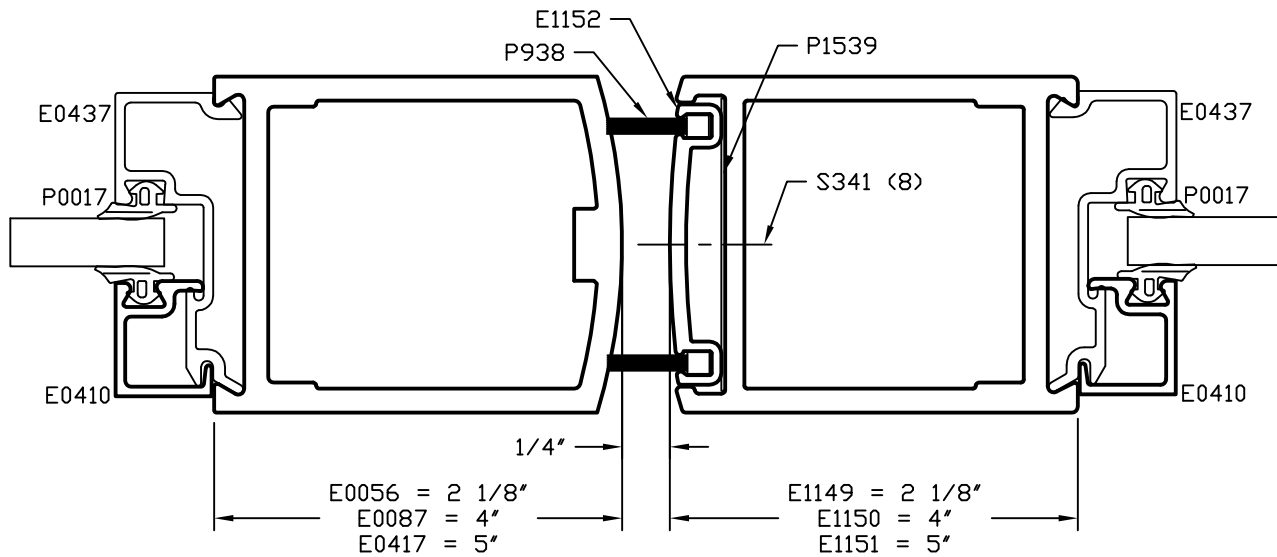
**BUTT HINGE OR OFFSET PIVOTS  
HINGE OR LOCK STILE**



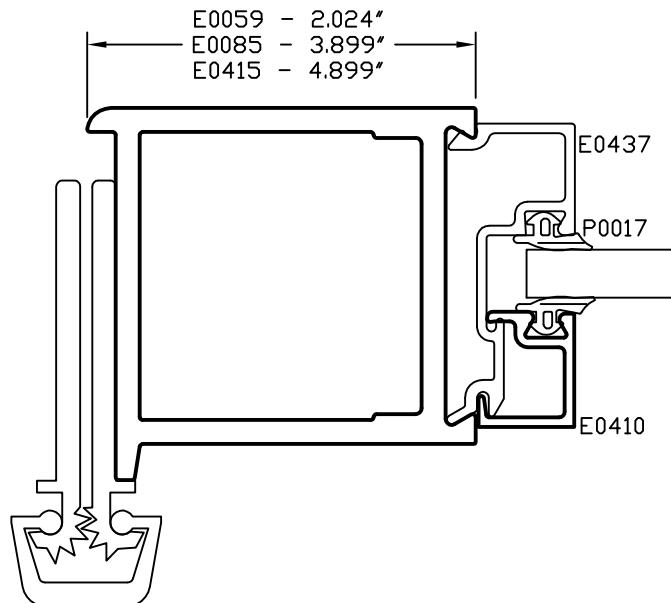
**CENTER PIVOT  
HINGE OR LOCK STILE**



**MEETING STILES**



**CONTINUOUS HINGE**



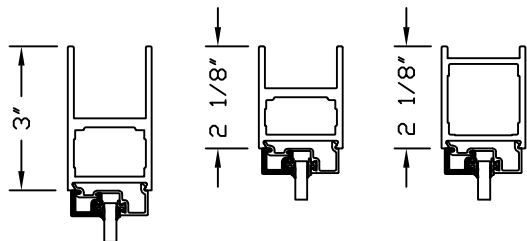
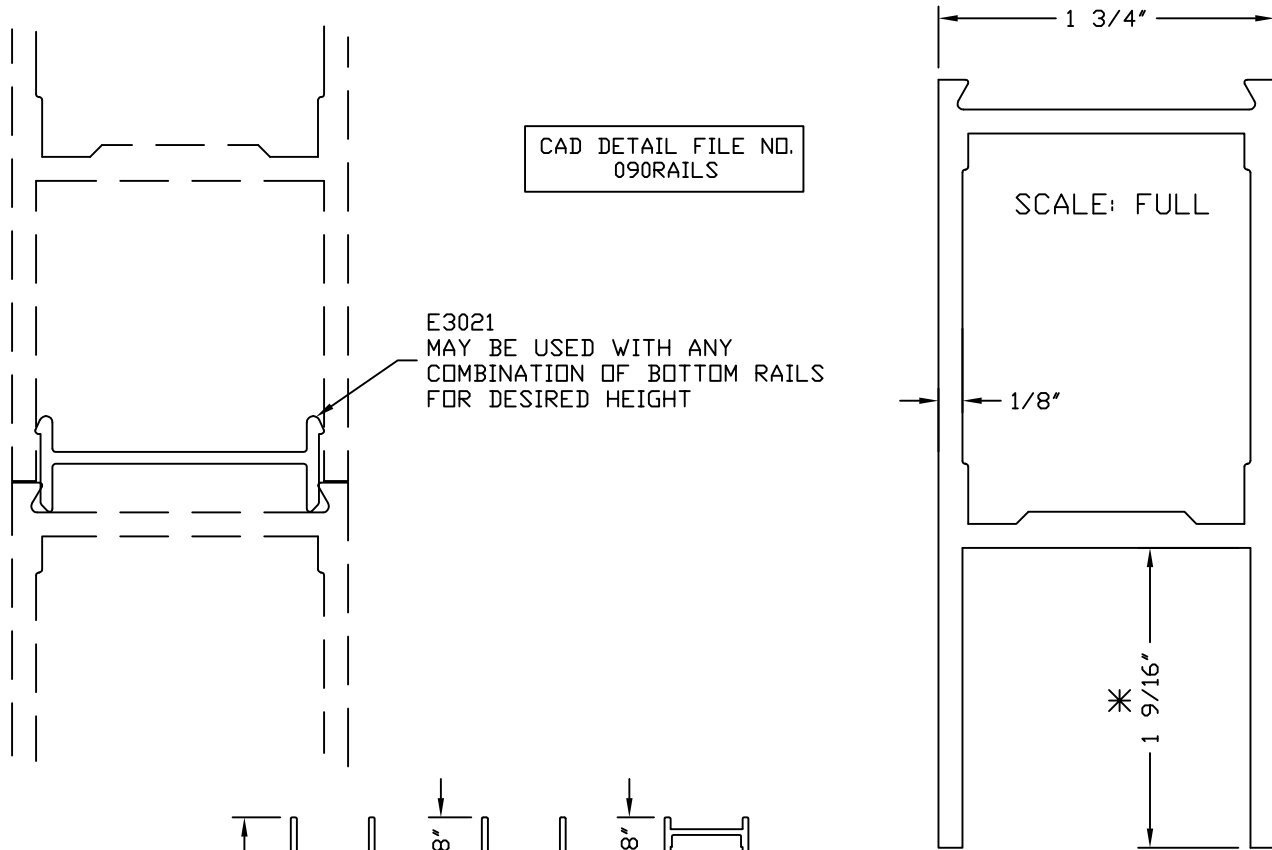


## 2.18

### Standard Entrances

#### Top and Bottom Rails

ALL RAILS CAN BE USED AS A TOP OR BOTTOM RAIL



E0148

E0255

E1375

\* TYPICAL POCKET DEPTH IS 1 9/16" EXCEPT THE FOLLOWING.

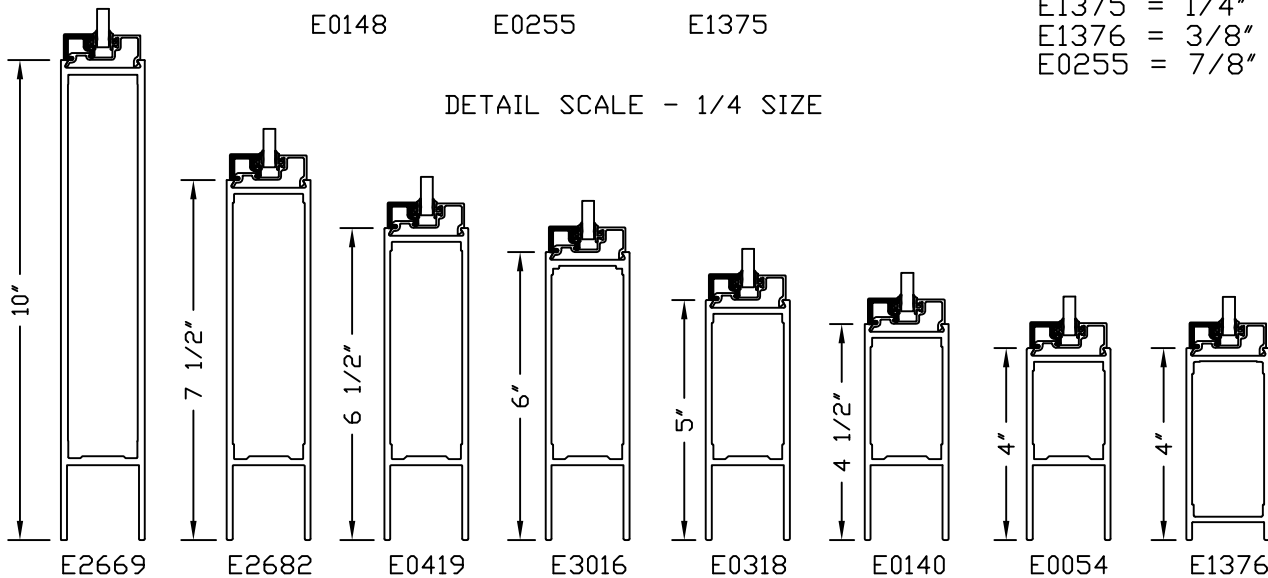
E0148 = 1 1/2"

E1375 = 1/4"

E1376 = 3/8"

E0255 = 7/8"

DETAIL SCALE - 1/4 SIZE



E2669

E2682

E0419

E3016

E0318

E0140

E0054

E1376

**TUBELITE**

DEPENDABLE

LEADERS IN ECO-EFFICIENT STOREFRONT,  
CURTAINWALL AND ENTRANCE SYSTEMS

2013

2.18a

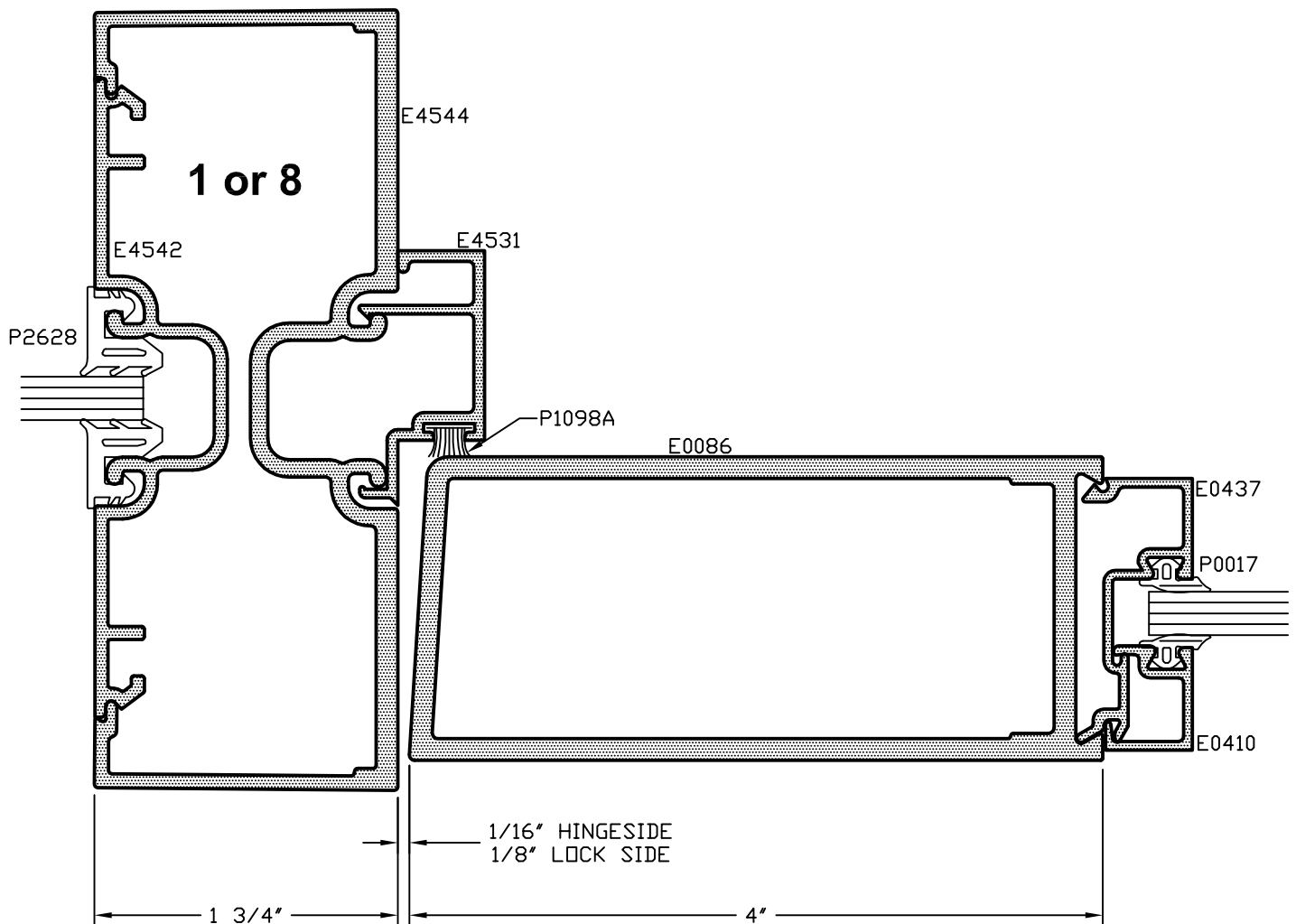
# E4500 Storefront

## Door Jamb - Medium Stile Offset Pivot or Butt Hinge

### STANDARD SIZES

SINGLE DOORS	DOUBLE DOORS
3'-0" X 7'-0"	5'-0" X 7'-0"
3'-6" X 7'-0"	6'-0" X 7'-0"

CAD DETAIL FILE NO.  
160DRJBMS



\*SEALANT, ROD, & ANCHORS NOT BY TUBELITE

**TUBELITE**  
STOREFRONT, CURTAINWALL & ENTRANCES  
DEPENDABLE

2009

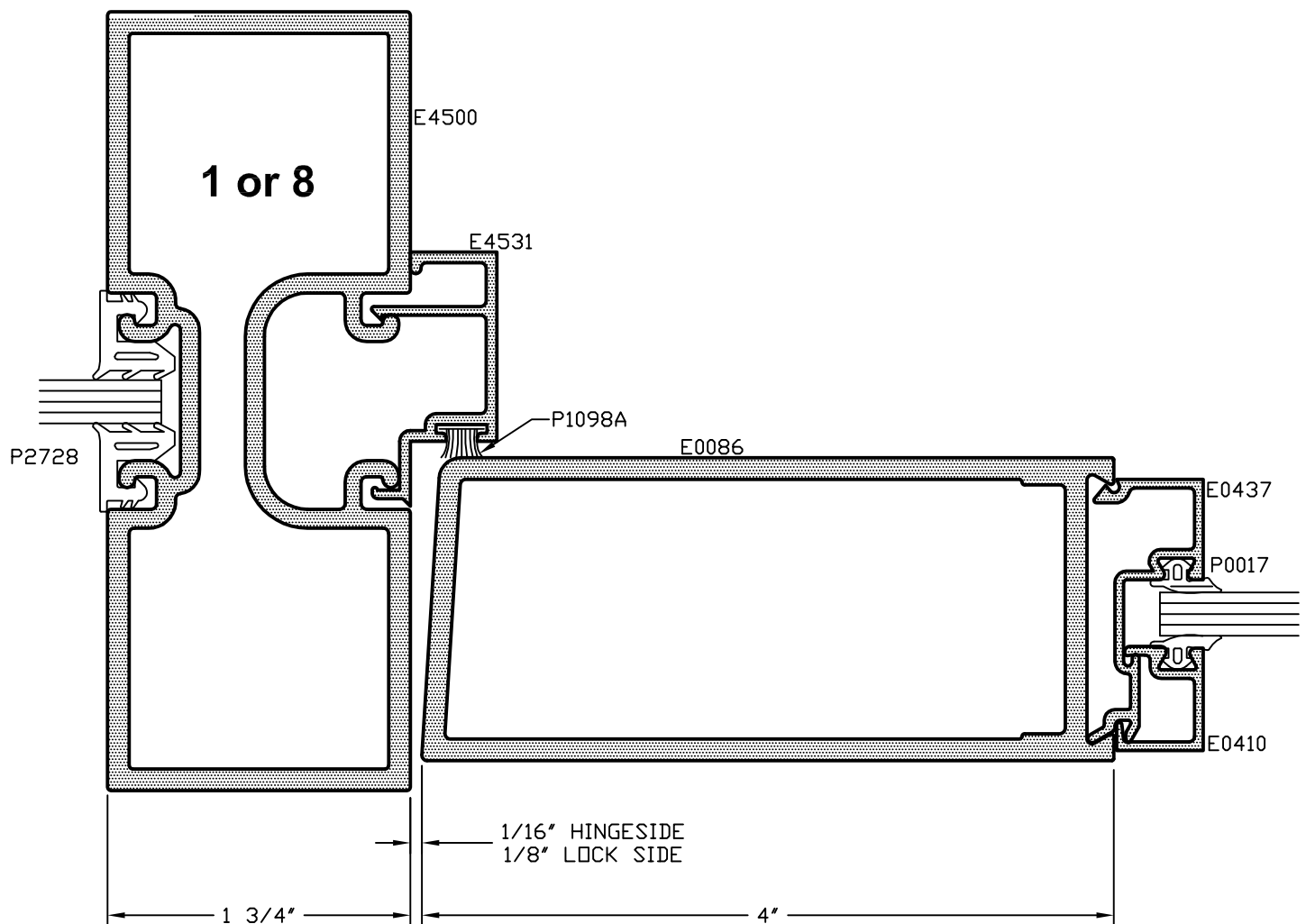
## E4500 Storefront

## Door Jamb - Medium Stile Offset Pivot or Butt Hinge

CAD DETAIL FILE NO.  
160DRJBMS1

### STANDARD SIZES

SINGLE DOORS	DOUBLE DOORS
3'-0" X 7'-0"	5'-0" X 7'-0"
3'-6" x 7'-0"	6'-0" x 7'-0"

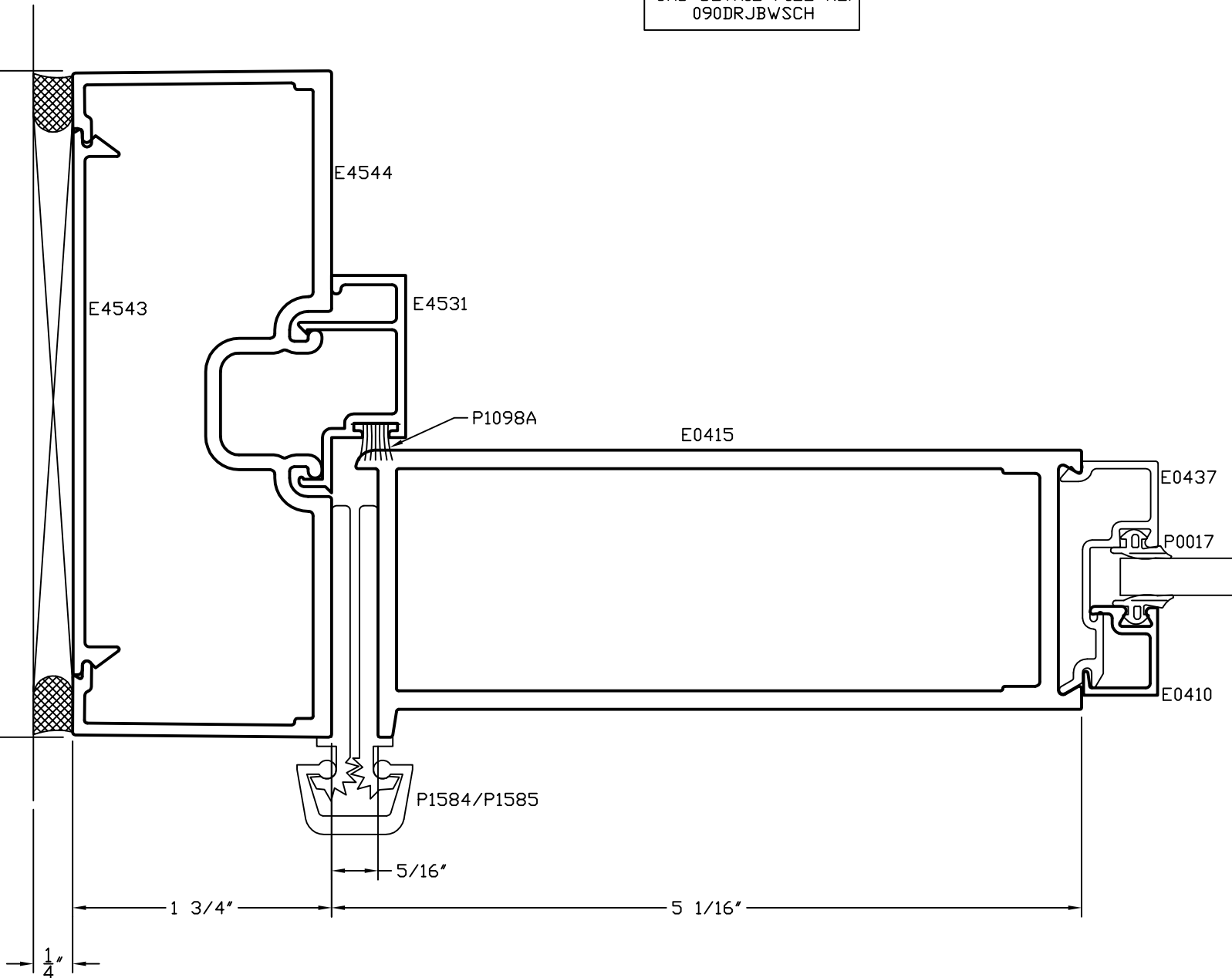


# 2.18c

## Standard Entrances

### Door Jamb - Wide Stile With Continuous Hinge

CAD DETAIL FILE NO.  
090DRJBWSCH



\*SEALANT, ROD, & ANCHORS NOT BY TUBELITE

**TUBELITE**  
DEPENDABLE  
LEADERS IN ECO-EFFICIENT STOREFRONT,  
CURTAINWALL AND ENTRANCE SYSTEMS  
2013

2.18d

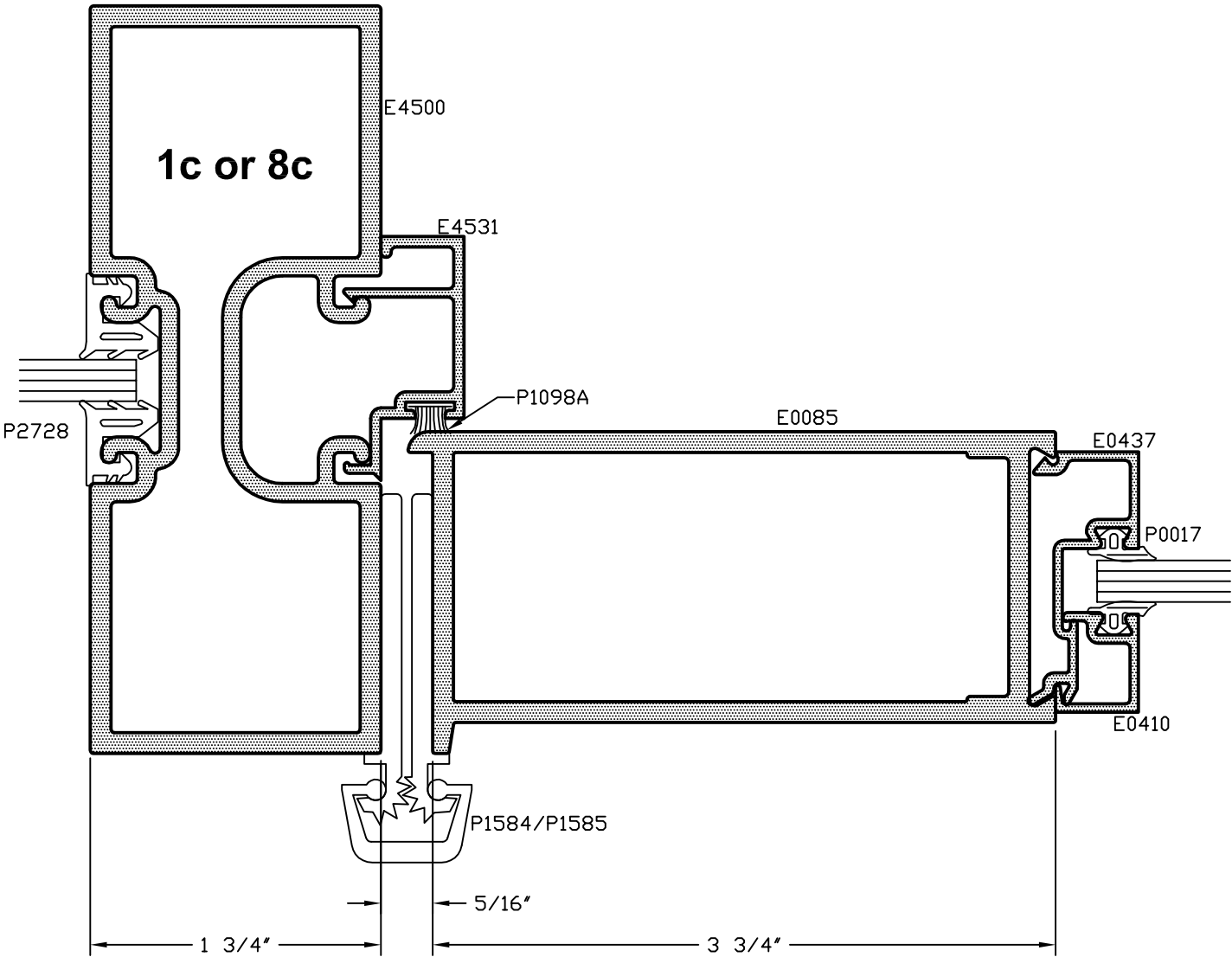
E4500 Storefront

Door Jamb - Medium Stile With Continuous Hinge

CAD DETAIL FILE NO.  
160DRJBMSCH1

STANDARD SIZES

SINGLE DOORS	DOUBLE DOORS
3'-0" X 7'-0"	5'-0" X 7'-0"
3'-6" X 7'-0"	6'-0" X 7'-0"

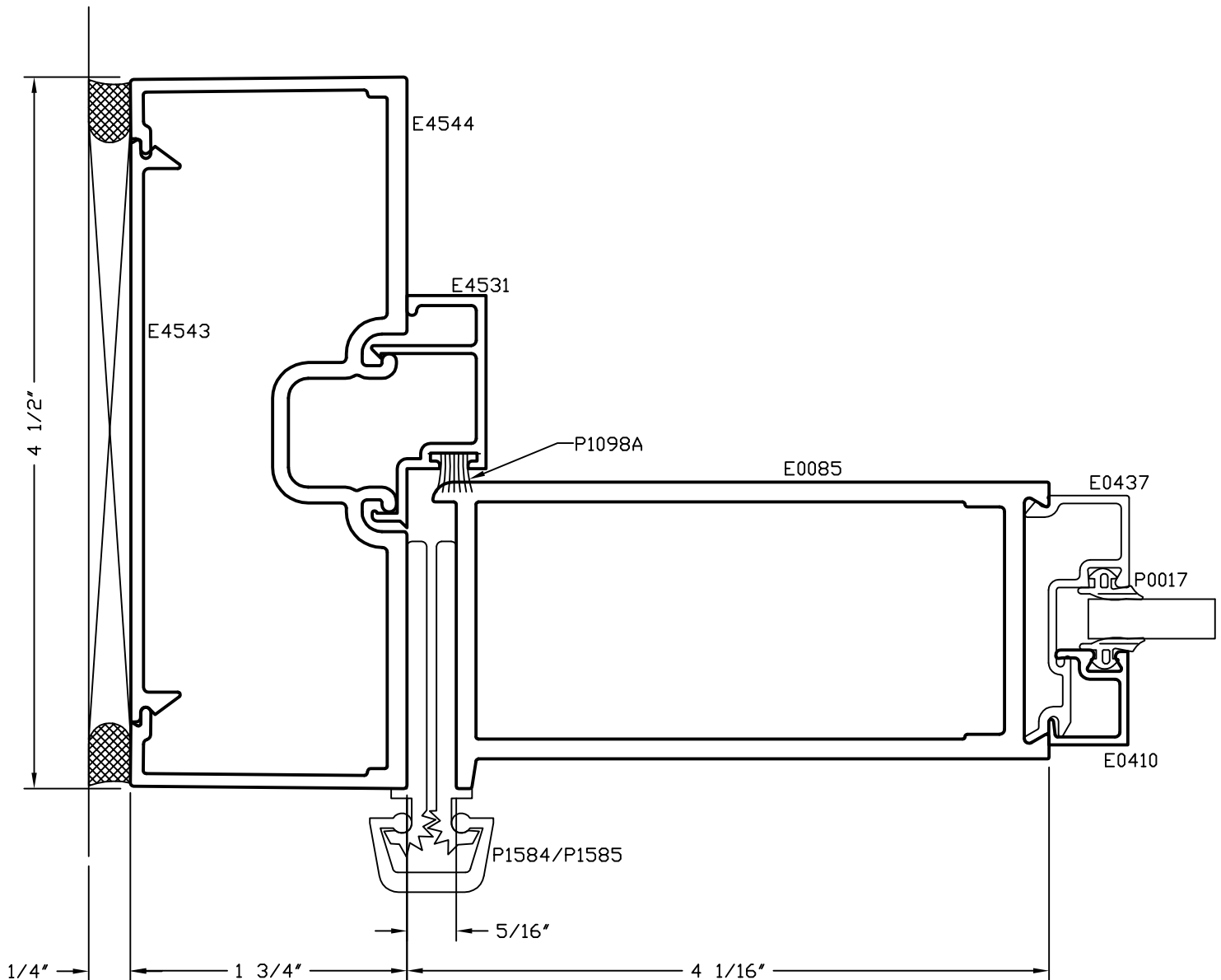


## 2.18e

### Standard Entrances

#### Door Jamb - Medium Stile With Continuous Hinge

CAD DETAIL FILE NO.  
090DRJBMSCH



2.18f

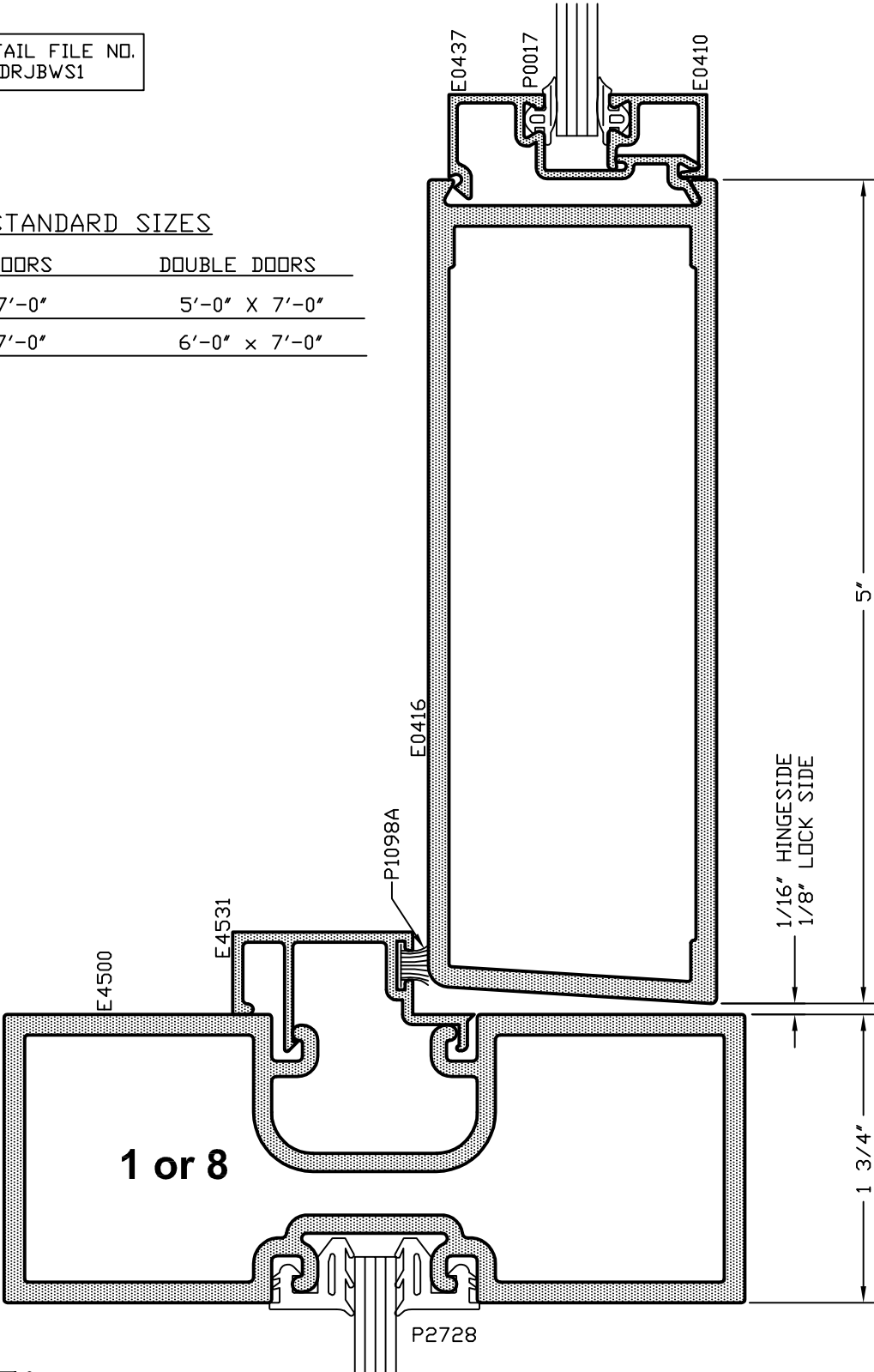
E4500 Storefront

Door Jamb - Wide Stile Offset Pivot or Butt Hinge

CAD DETAIL FILE NO.  
160DRJBWS1

STANDARD SIZES

SINGLE DOORS	DOUBLE DOORS
3'-0" X 7'-0"	5'-0" X 7'-0"
3'-6" X 7'-0"	6'-0" X 7'-0"



# 2.18g

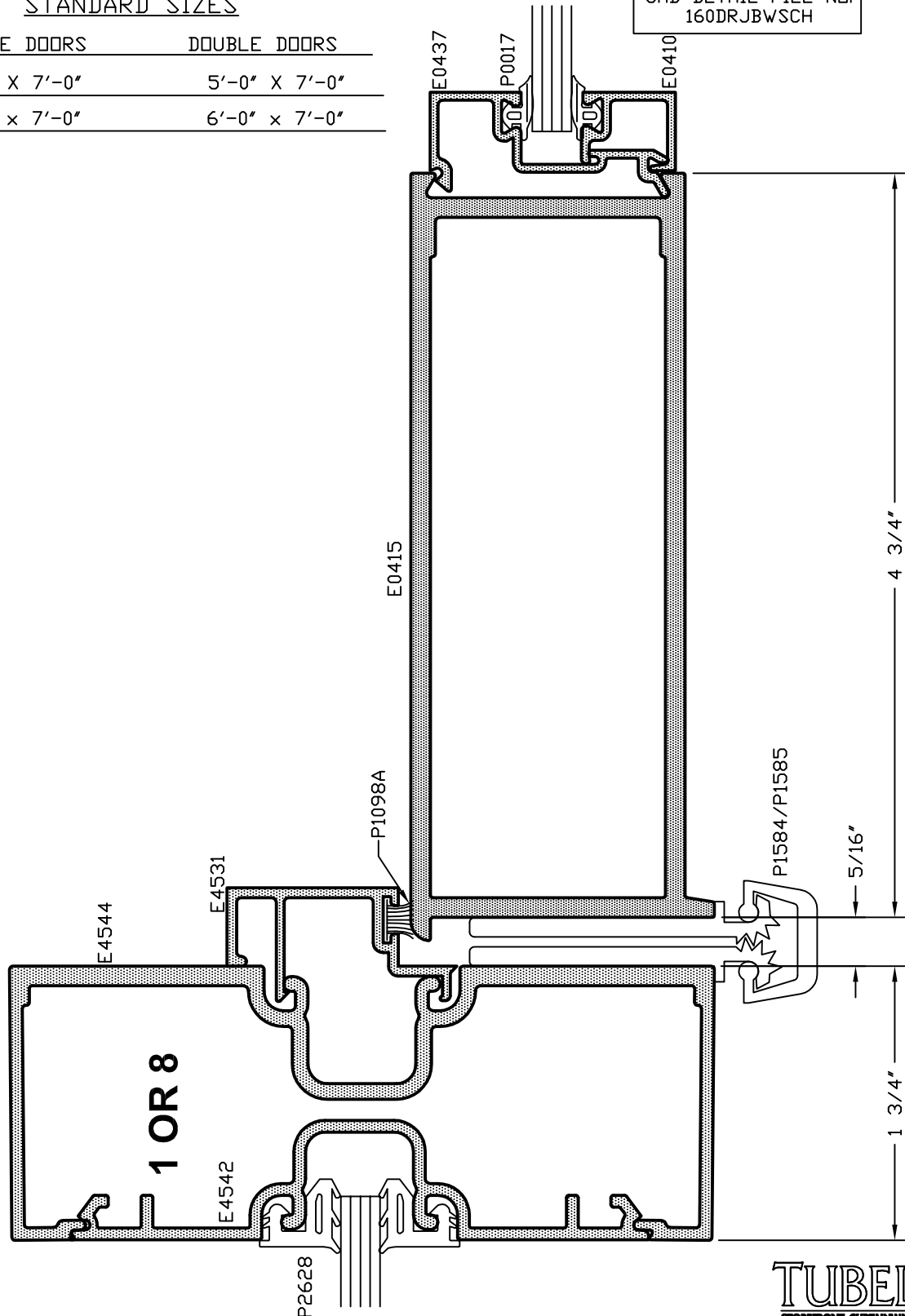
## E4500 Storefront

### Door Jamb - Wide Stile With Continuous Hinge

#### STANDARD SIZES

SINGLE DOORS	DOUBLE DOORS
3'-0" X 7'-0"	5'-0" X 7'-0"
3'-6" X 7'-0"	6'-0" X 7'-0"

CAD DETAIL FILE NO.  
160DRJBWSCH



\*SEALANT, ROD, & ANCHORS NOT BY TUBELITE

**TUBELITE**  
STOREFRONT, CURTAINWALL & ENTRANCES  
DEPENDABLE  
2009



2.18h

## E4500 Storefront

Door Jamb - Wide Stile With Continuous Hinge

CAD DETAIL FILE NO.  
160DRJBWSCH1

### STANDARD SIZES

SINGLE DOORS

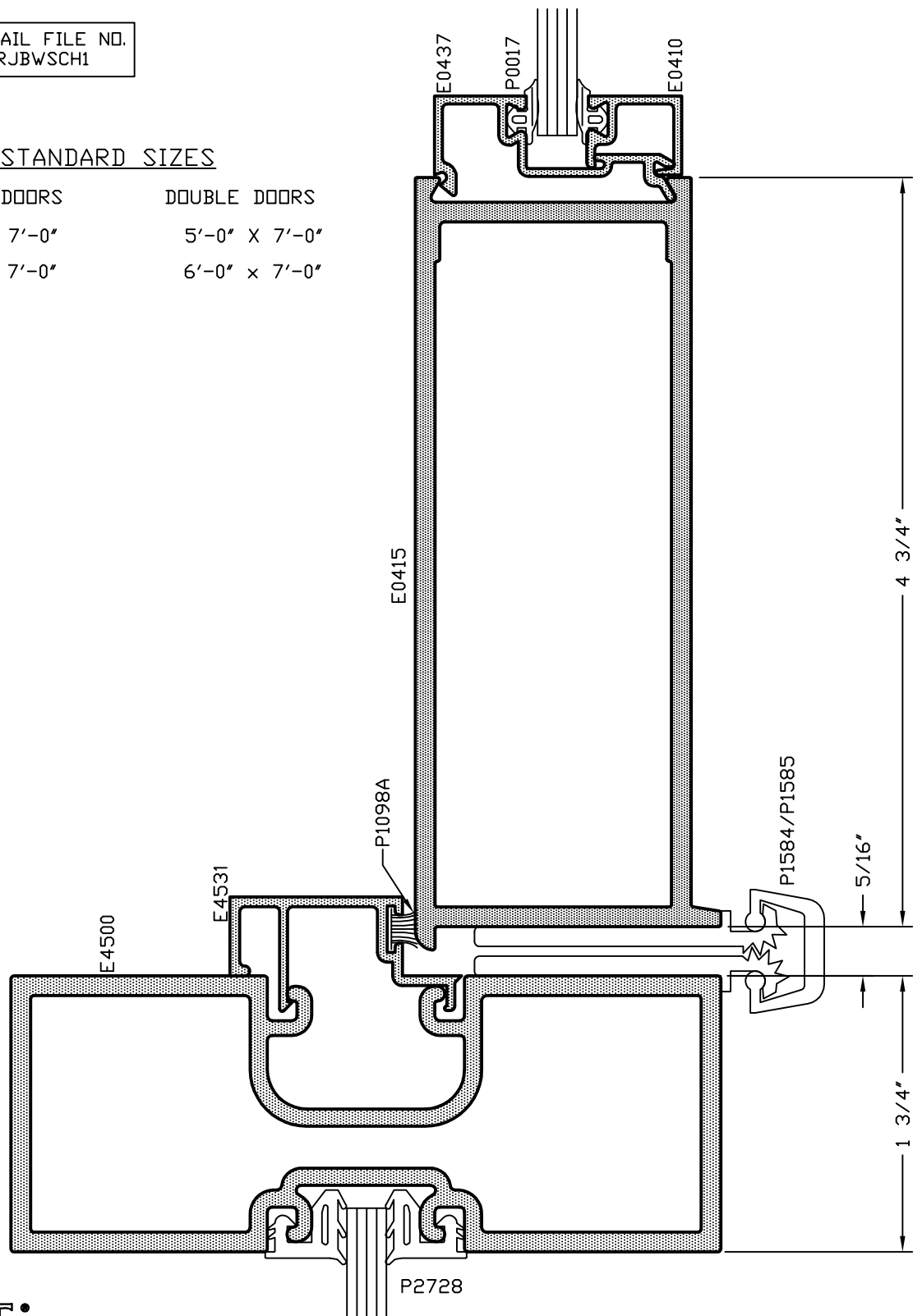
3'-0" X 7'-0"

3'-6" X 7'-0"

DOUBLE DOORS

5'-0" X 7'-0"

6'-0" X 7'-0"



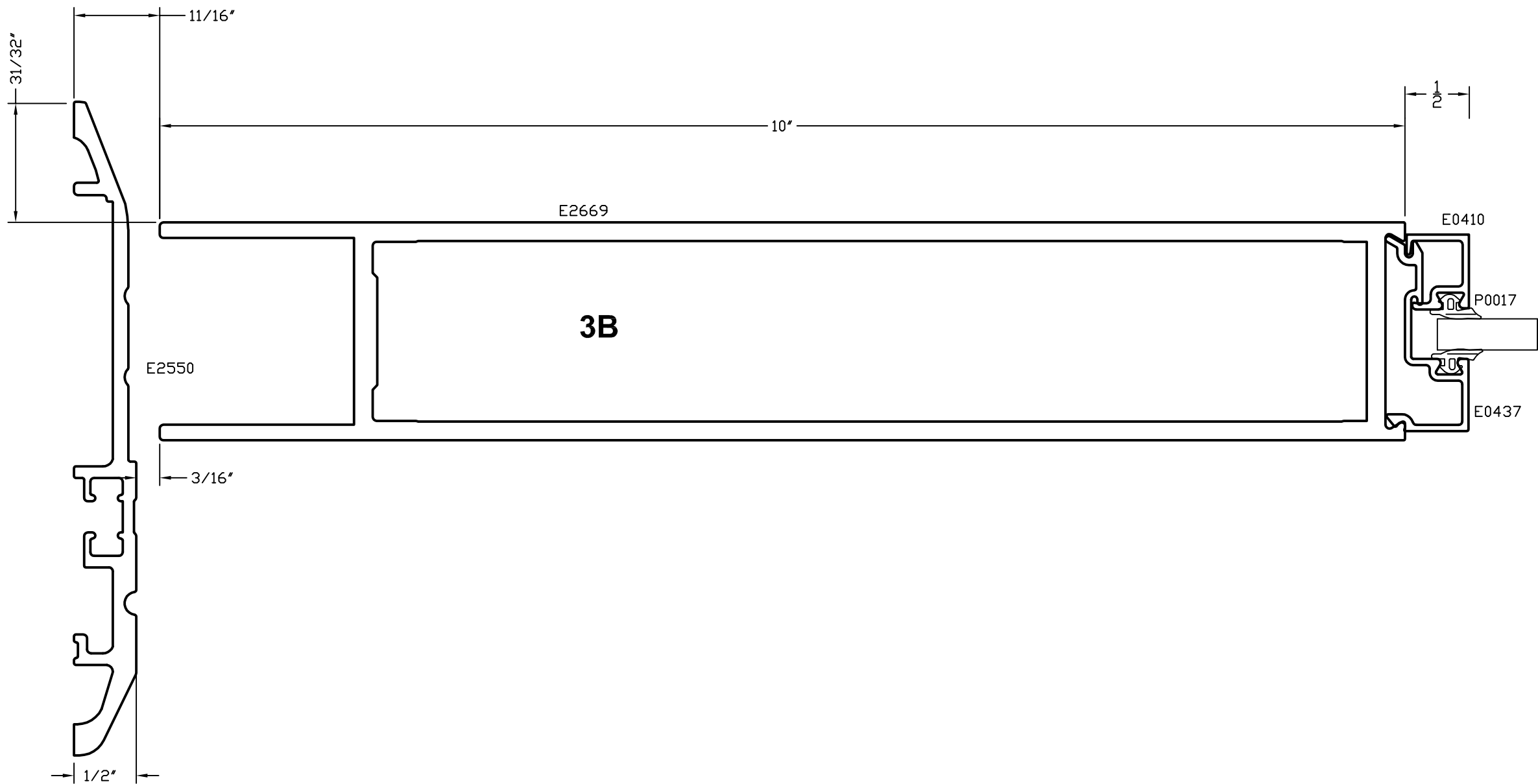
**TUBELITE**  
STOREFRONT, CURTAINWALL & ENTRANCES  
DEPENDABLE

2009

\*SEALANT, ROD, & ANCHORS NOT BY TUBELITE

2.19  
Standard Entrances  
10" Bottom Rail

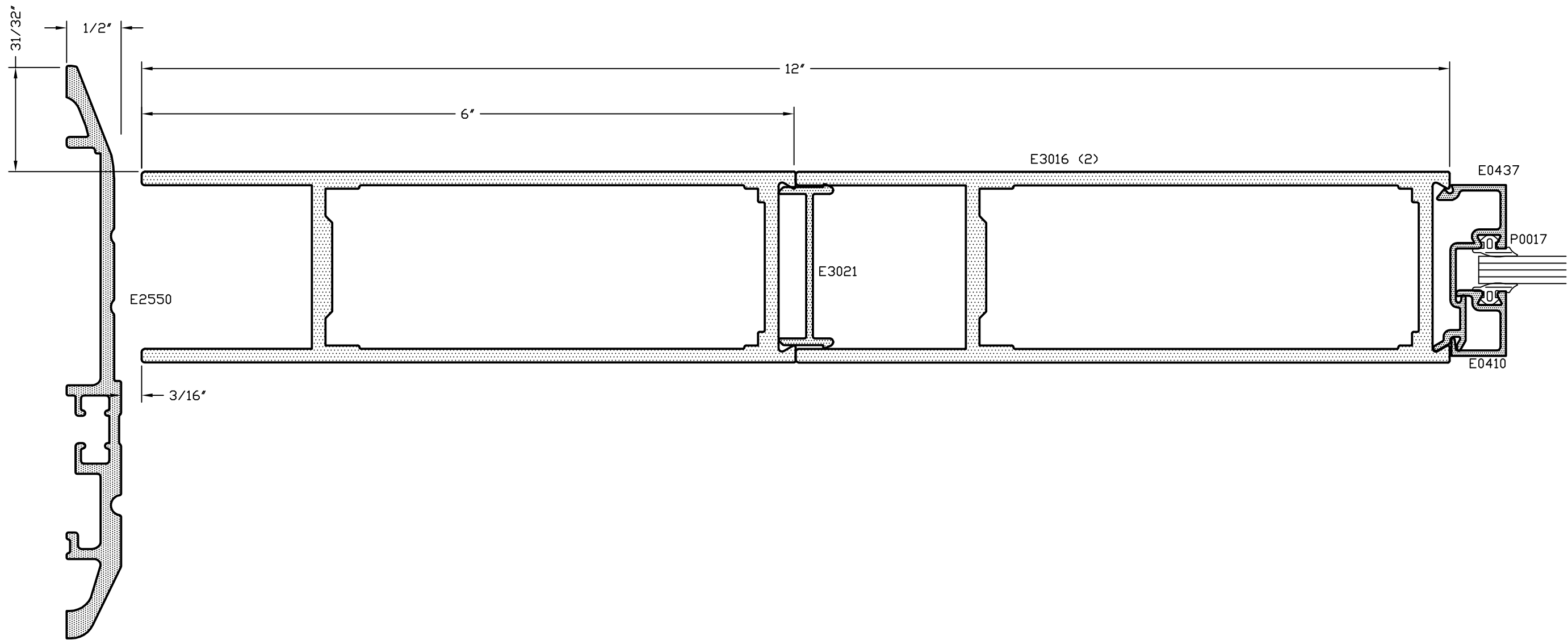
CAD DETAIL FILE NO.  
090DRBR10



\*SEALANT, ROD, & ANCHORS NOT BY TUBELITE

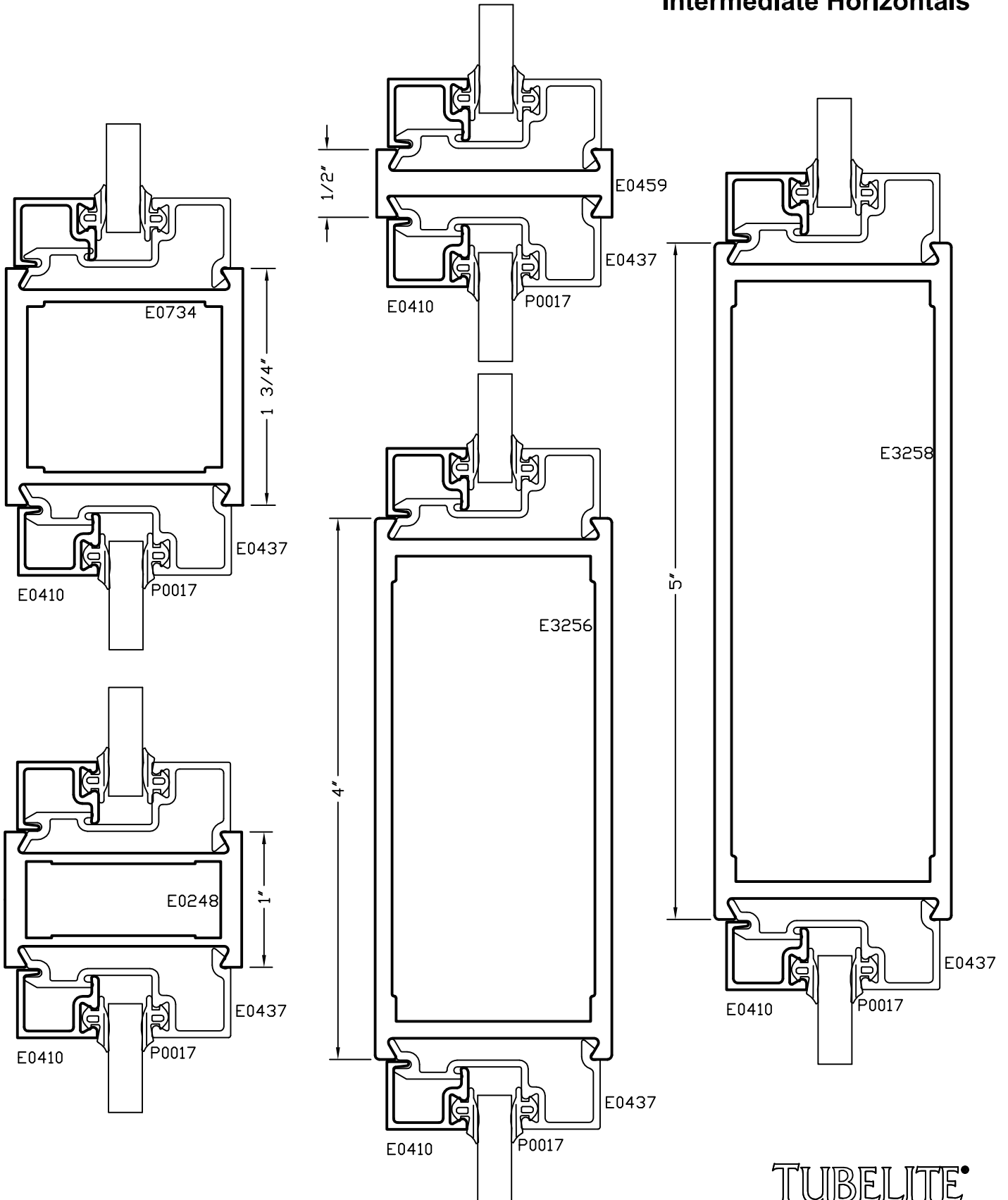
2.20  
Standard Entrances  
12" Bottom Rail

CAD DETAIL FILE NO.  
090DRBR12



# Standard Entrances Intermediate Horizontals

CAD DETAIL FILE NO.  
090HORZ



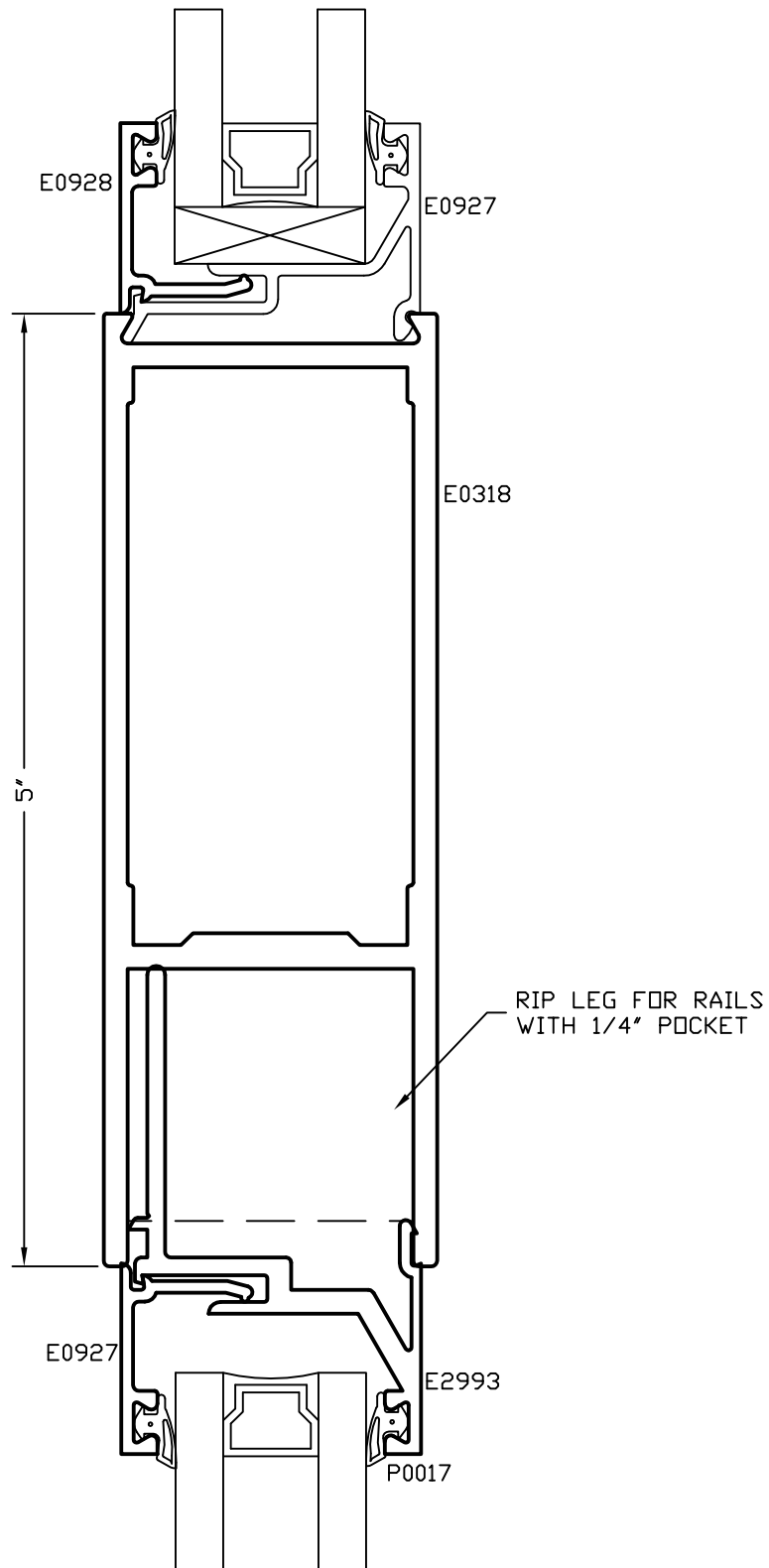
\*SEALANT, ROD, & ANCHORS NOT BY TUBELITE

## 2.22

### Standard Entrances

#### Intermediate Horizontal Glazing Adaptor - 1" Glass

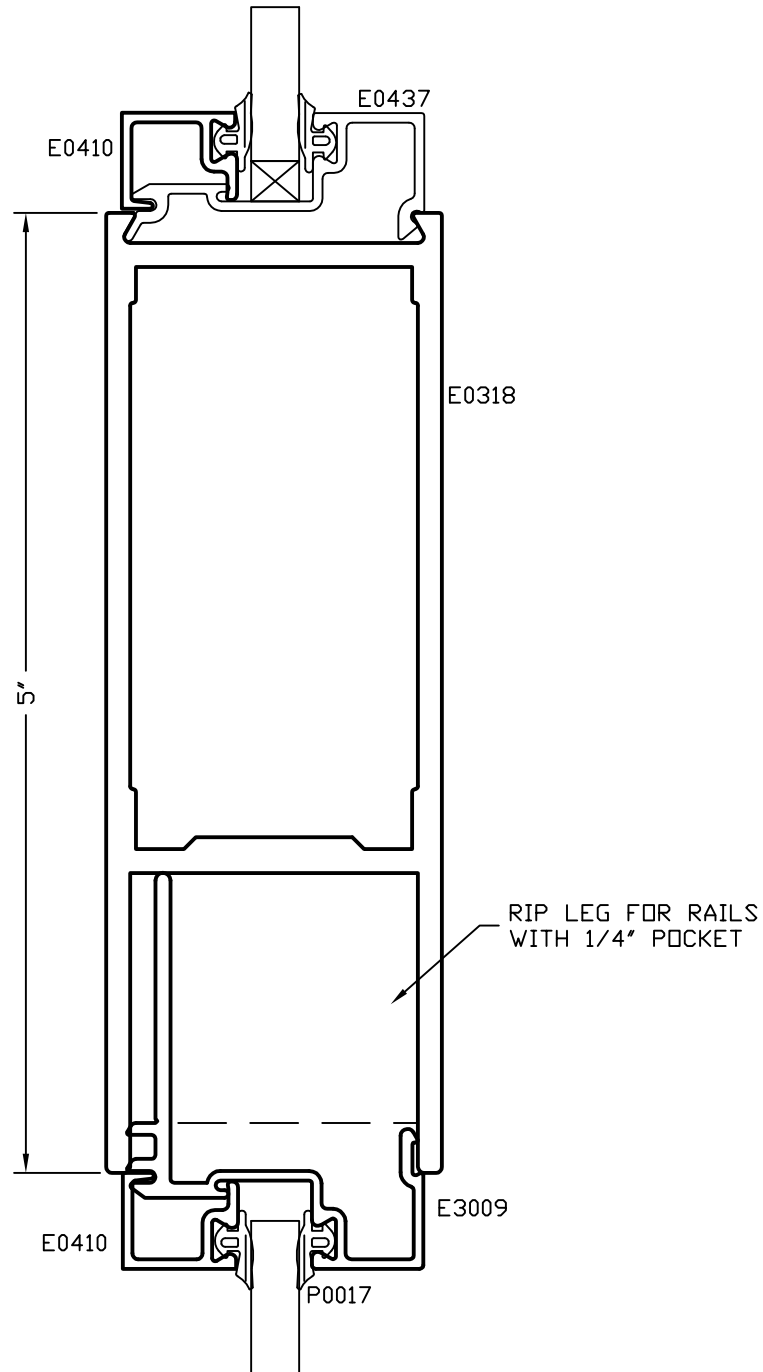
CAD DETAIL FILE NO.  
090HORZ2



# Standard Entrances

## Intermediate Horizontal Glazing Adaptor - 1/4" Glass

CAD DETAIL FILE NO.  
090HORZ1



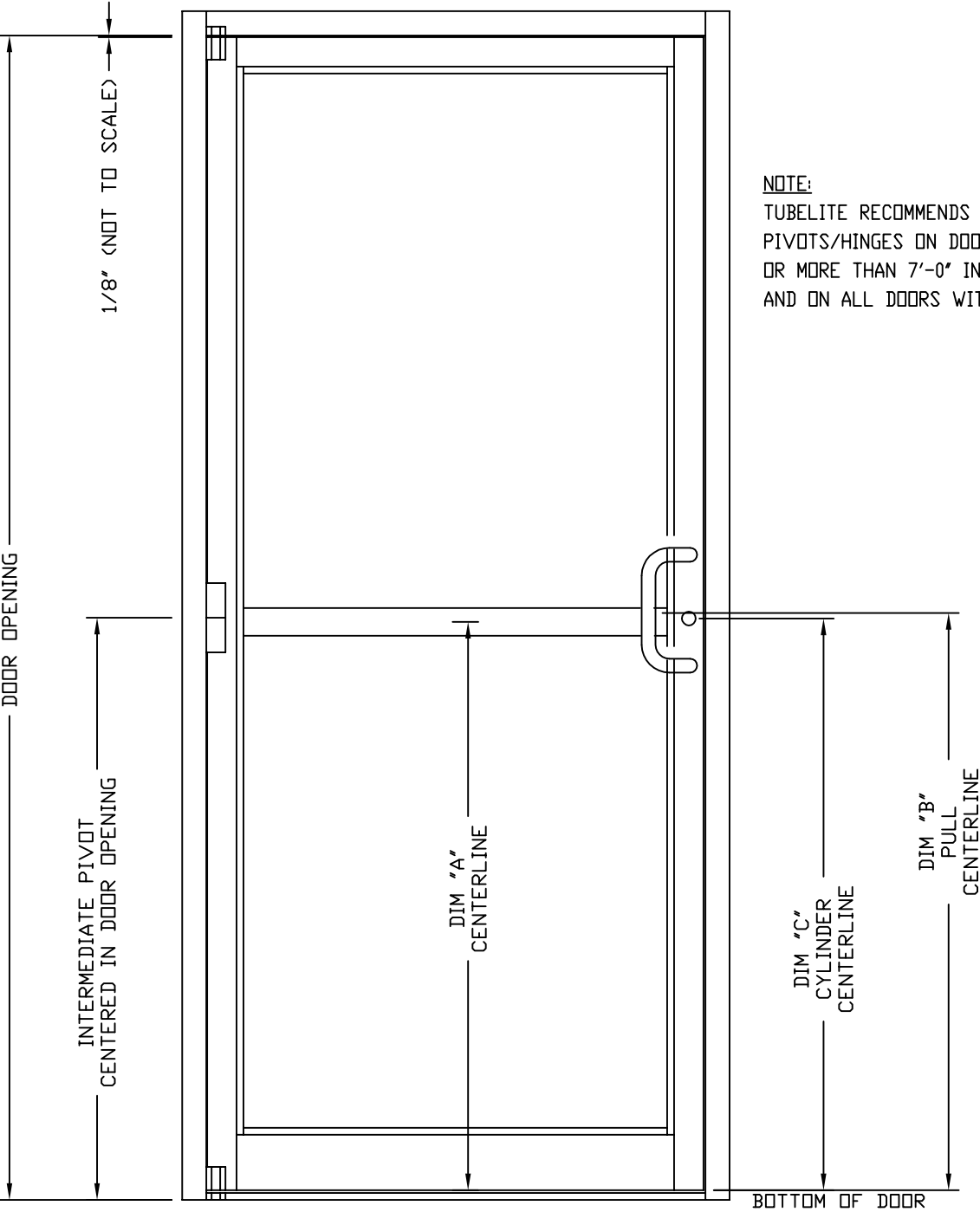
\*SEALANT, ROD, & ANCHORS NOT BY TUBELITE

2.24

Standard Entrances

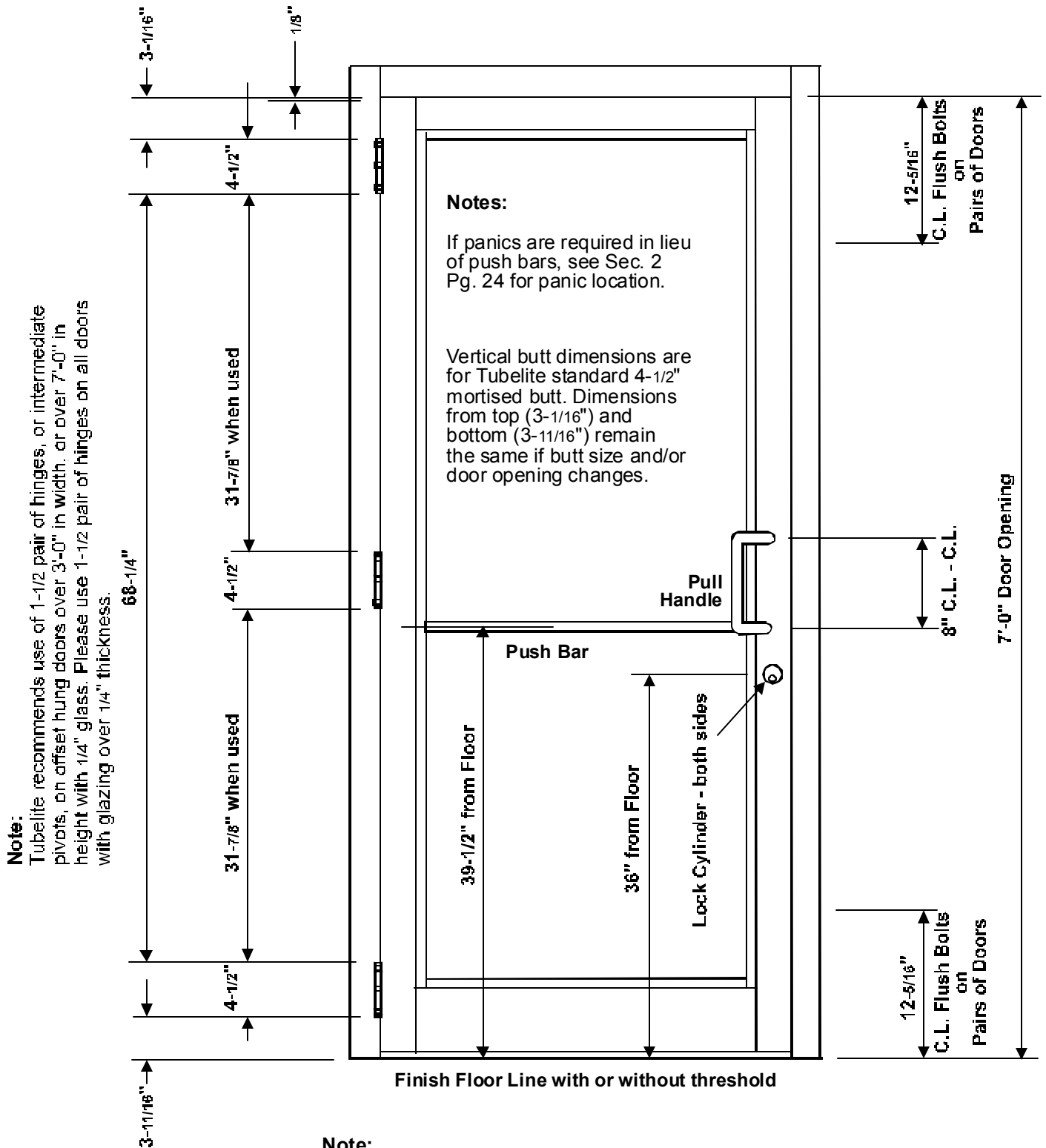
Panic Exit Device Locations

CAD DETAIL FILE NO.  
090PANICELEV



PANIC	DIM 'A'	DIM 'B'	DIM 'C'
P3692	40 5/8"	41 5/8"	41 9/16"
P3792	40 5/8"	41 5/8"	40 7/8"
P3192	41 1/4"	41 1/4"	41 5/16"

## 2.25 Standard Entrances Hardware Locations



**Note:**

On custom door opening heights, the bottom dimensions of 3-11/16" and top dimensions of 3-1/16" are constant. Intermediate dimensions of 68-1/4" and 31-7/8" will vary accordingly. Dimensions of 39-1/2" and 36" are constant.



## Head Using E14080

Technical drawing of a window assembly, showing a side elevation and a cross-section.

**Side Elevation:**

- Width: 4 1/2"
- Height: 4"
- Top corner detail: 1/4"
- Frame part number: E14080

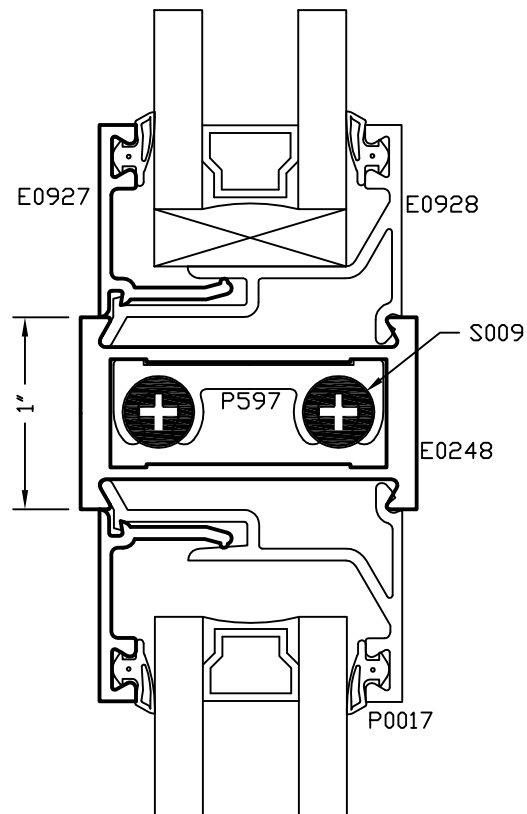
**Cross-section:**

- Depth: 2 1/8"
- Height: 1/8"
- Frame part number: E14080
- Internal components: E2298, P1098A, E1375, E0437, E0410, P0017

# Standard Entrances

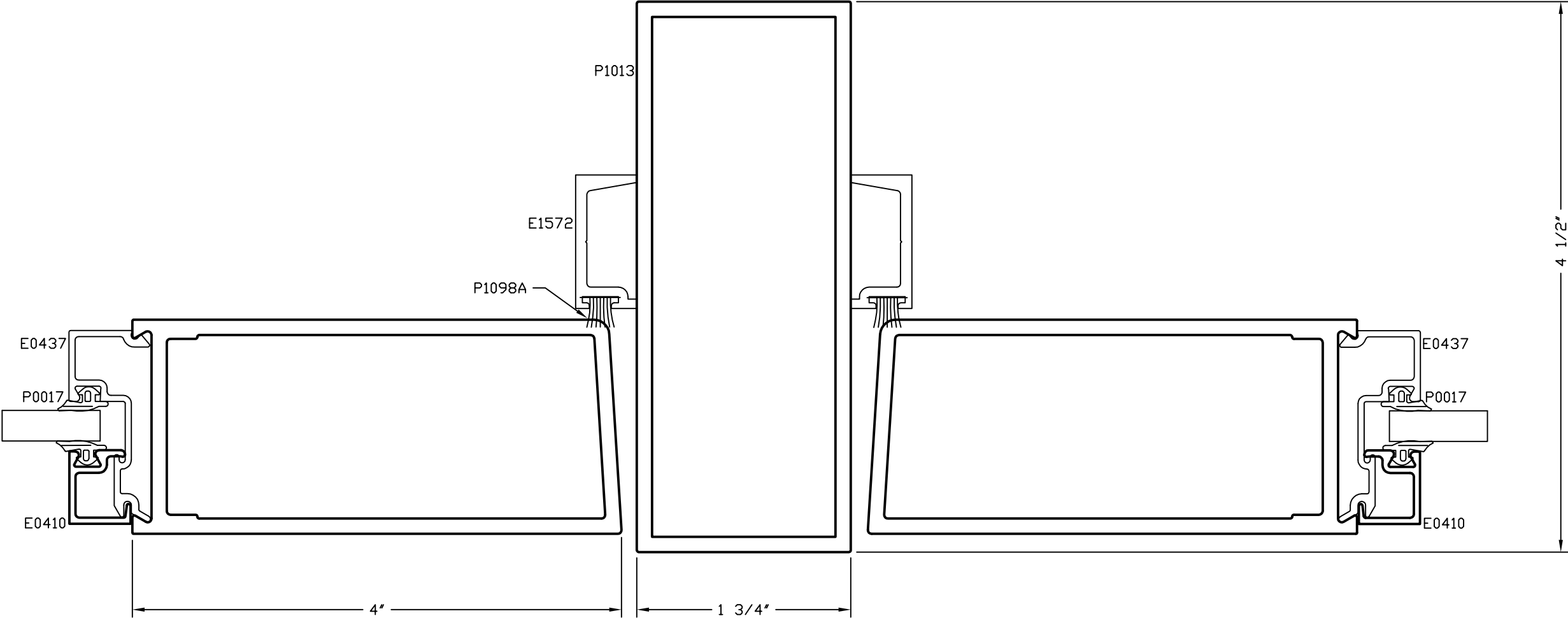
## Intermediate Horizontal With 1" Glass

CAD DETAIL FILE NO.  
090HORZ3



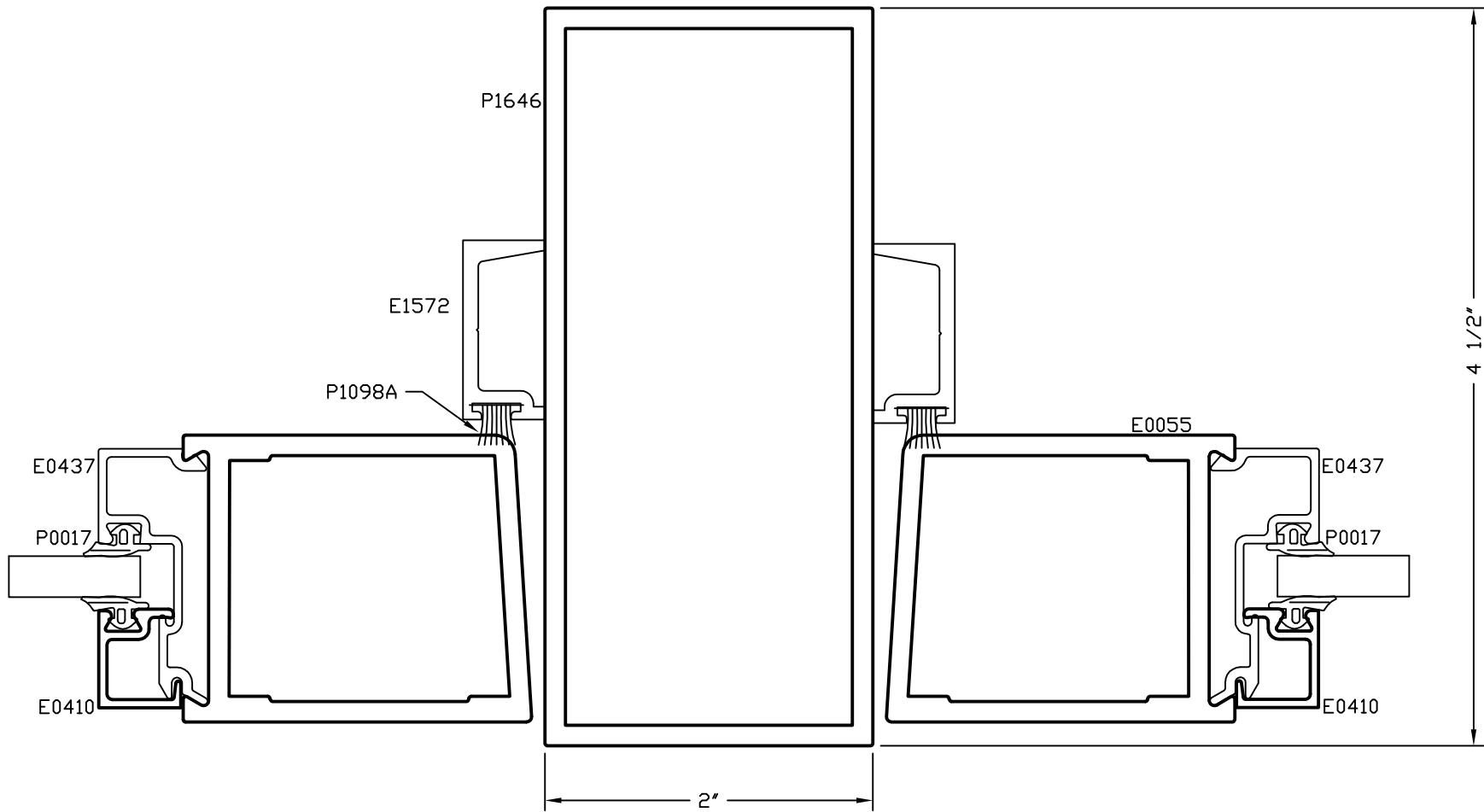
Standard Entrances  
1 3/4" Removable Mullion - P1013

CAD DETAIL FILE NO.  
090RMUL



Standard Entrances  
2" Removable Mullion - P1646

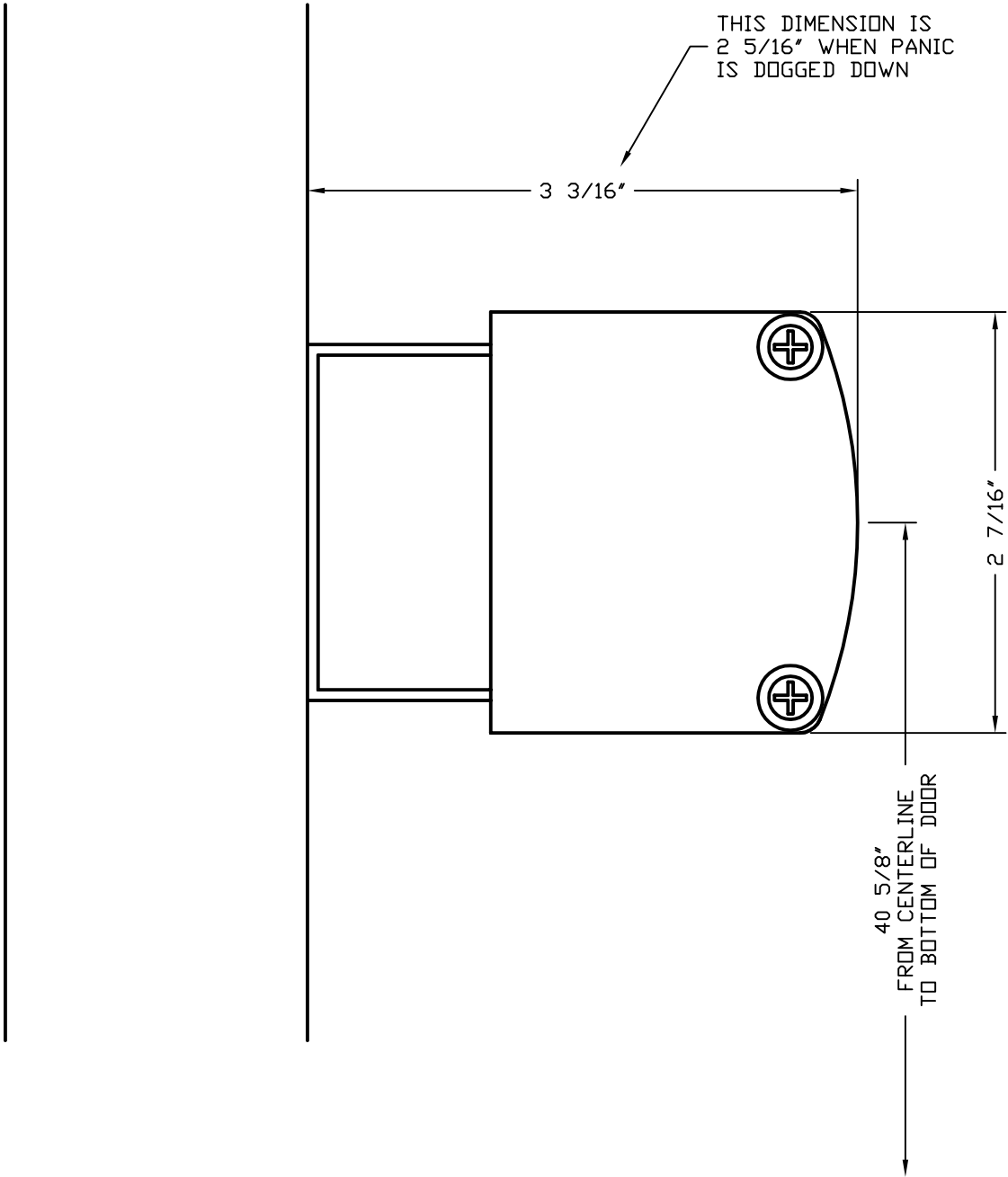
CAD DETAIL FILE NO.  
090RMUL-P1646



\*SEALANT, ROD, & ANCHORS NOT BY TUBELITE

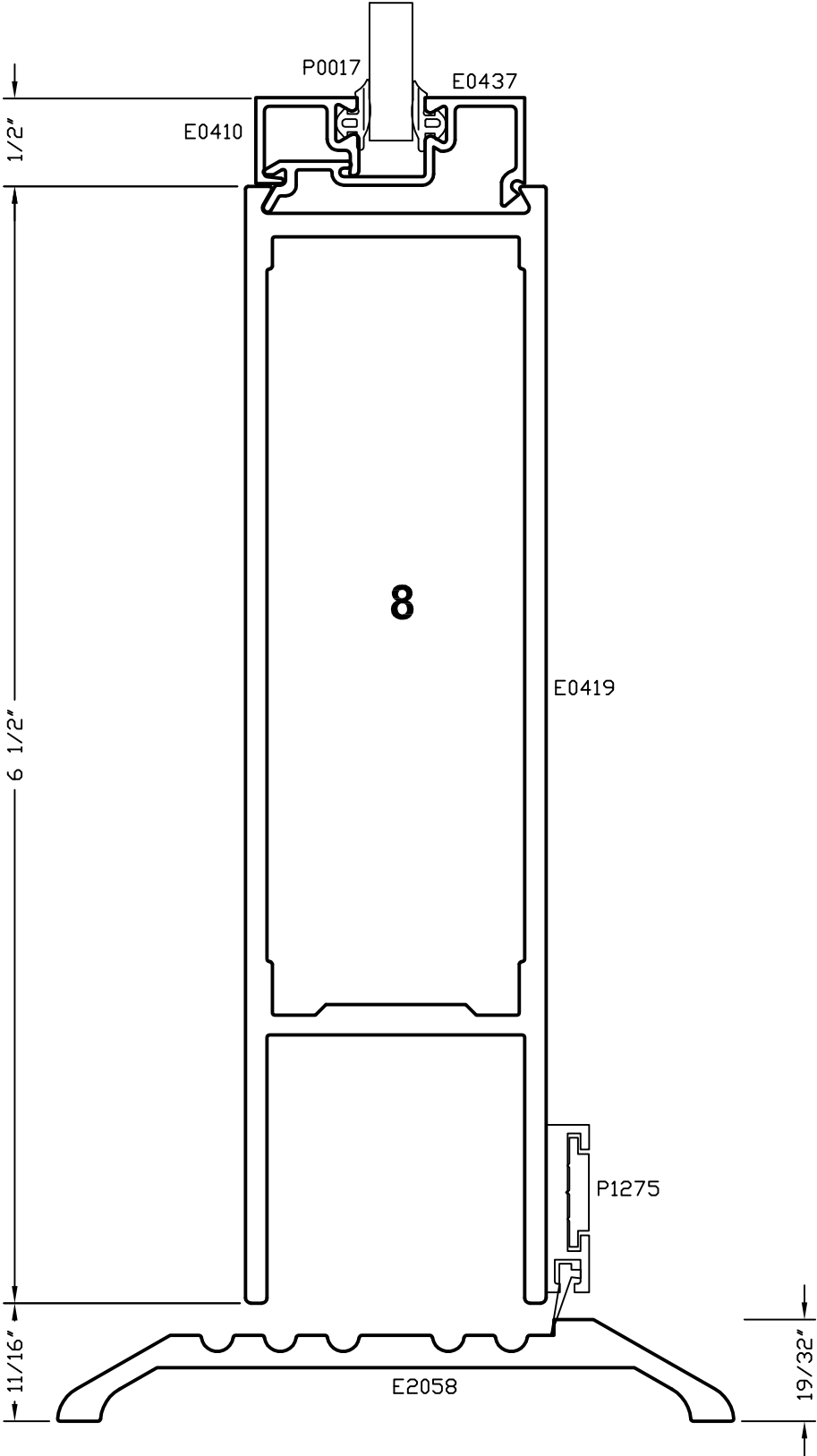
Standard Entrances  
CVR or Rim Panic End View

CAD DETAIL FILE NO.  
090PANIC



Standard Entrances  
Door Bottom Rail

CAD DETAIL FILE NO.  
090DRBR3

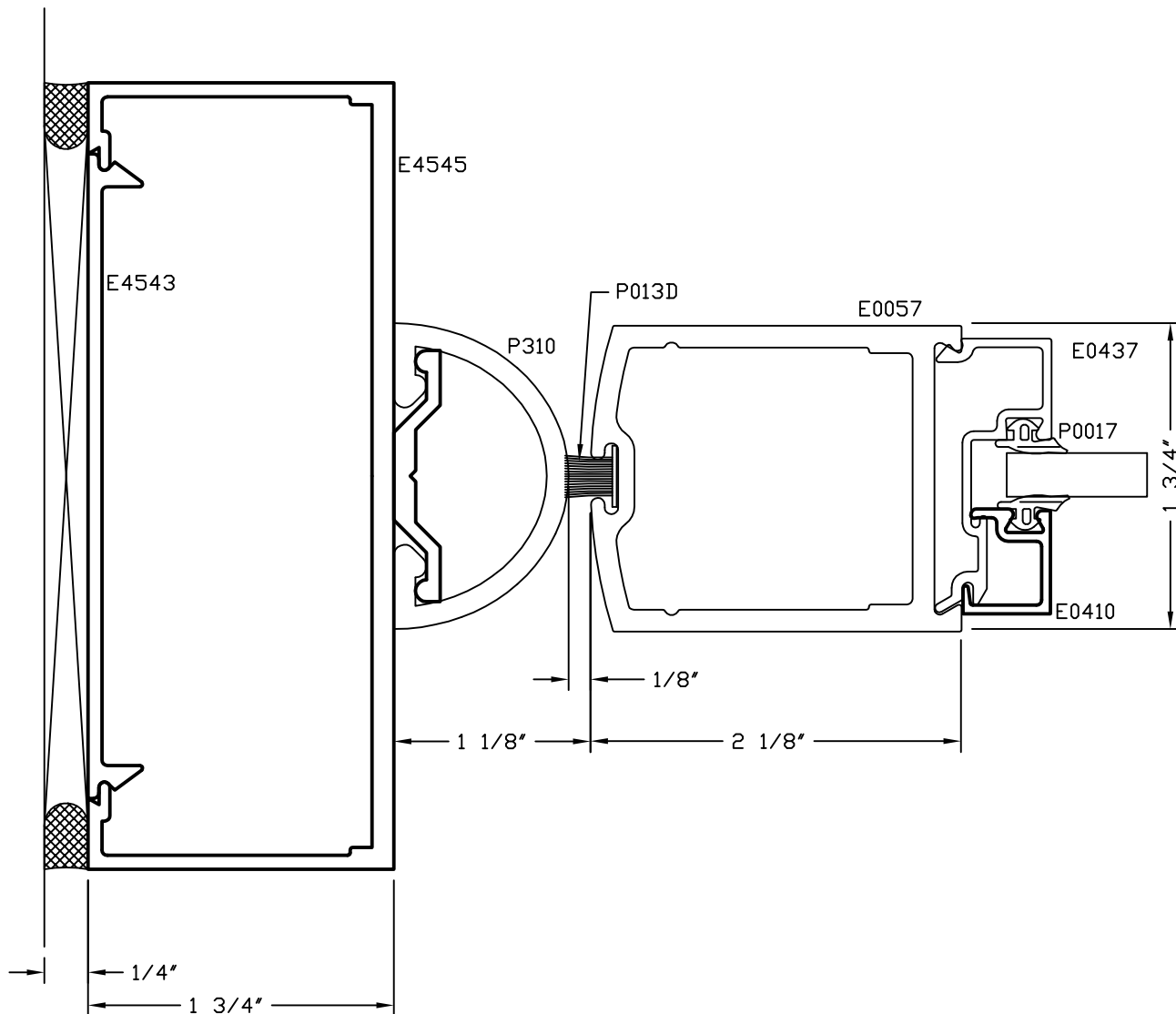


\*SEALANT, ROD, & ANCHORS NOT BY TUBELITE

# Standard Entrances

## Door Jamb - Center Pivot with Finger Guard

CAD DETAIL FILE NO.  
090DRJB3



# Standard Entrances

## Door Jamb With Intermediate Pivot

CAD DETAIL FILE NO.  
090DRJB4

